

Product datasheet for **TA316275**

NEGR1 Rabbit Polyclonal Antibody

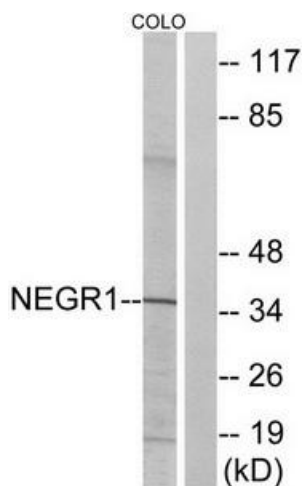
Product data:

Product Type:	Primary Antibodies
Applications:	WB
Recommended Dilution:	WB: 1:500~1:3000, ELISA: 1:20000
Reactivity:	Human, Mouse, Rat
Host:	Rabbit
Isotype:	IgG
Clonality:	Polyclonal
Immunogen:	The antiserum was produced against synthesized peptide derived from internal of human NEGR1.
Formulation:	Phosphate buffered saline (without Mg ²⁺ and Ca ²⁺), pH 7.4, 150mM NaCl, 0.02% sodium azide and 50% glycerol.
Concentration:	lot specific
Purification:	The antibody was affinity-purified from rabbit antiserum by affinity-chromatography using epitope-specific immunogen.
Conjugation:	Unconjugated
Storage:	Store at -20°C as received.
Stability:	Stable for 12 months from date of receipt.
Gene Name:	neuronal growth regulator 1
Database Link:	NP_776169 Entrez Gene 59318 Rat Entrez Gene 320840 Mouse Entrez Gene 257194 Human Q7Z3B1
Synonyms:	DMML2433; IGLON4; KILON; Ntra
Note:	NEGR1 antibody detects endogenous levels of total NEGR1 protein.
Protein Pathways:	Cell adhesion molecules (CAMs)

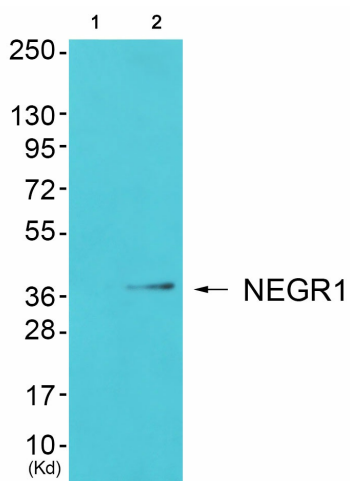


[View online »](#)

Product images:



Western blot analysis of extracts from COLO cells, using NEGR1 antibody. The lane on the right is treated with the synthesized peptide.



Western blot analysis of extracts from HuvEc cells (Lane 2), using NEGR1 Antibody. The lane on the left is treated with synthesized peptide.