

Product datasheet for **TA316273**

OR4C3 Rabbit Polyclonal Antibody

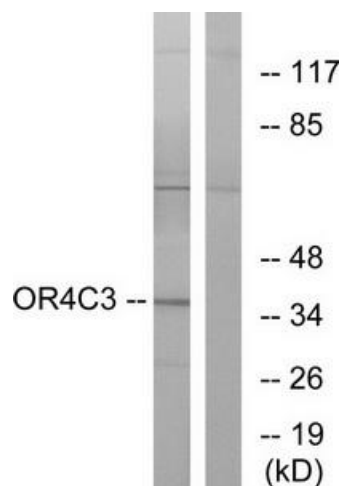
Product data:

| | |
|-----------------------|--|
| Product Type: | Primary Antibodies |
| Applications: | IF, WB |
| Recommended Dilution: | WB: 1:500~1:3000, IF: 1:100~1:500, ELISA: 1:20000 |
| Reactivity: | Human |
| Host: | Rabbit |
| Isotype: | IgG |
| Clonality: | Polyclonal |
| Immunogen: | The antiserum was produced against synthesized peptide derived from internal of human OR4C3. |
| Formulation: | Phosphate buffered saline (without Mg ²⁺ and Ca ²⁺), pH 7.4, 150mM NaCl, 0.02% sodium azide and 50% glycerol. |
| Concentration: | lot specific |
| Purification: | The antibody was affinity-purified from rabbit antiserum by affinity-chromatography using epitope-specific immunogen. |
| Conjugation: | Unconjugated |
| Storage: | Store at -20°C as received. |
| Stability: | Stable for 12 months from date of receipt. |
| Gene Name: | olfactory receptor family 4 subfamily C member 3 |
| Database Link: | NP_001004702 Entrez Gene 256144 Human Q8NH37 |
| Synonyms: | OR11-98 |
| Note: | OR4C3 antibody detects endogenous levels of total OR4C3 protein. |
| Protein Families: | Druggable Genome, Transmembrane |
| Protein Pathways: | Olfactory transduction |

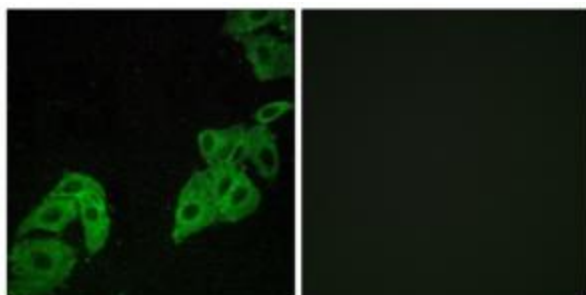


[View online »](#)

Product images:



Western blot analysis of extracts from K562 cells, using OR4C3 antibody. The lane on the right is treated with the synthesized peptide.



Immunofluorescence analysis of A549 cells, using OR4C3 antibody. The picture on the right is treated with the synthesized peptide.