

Product datasheet for **TA316272**

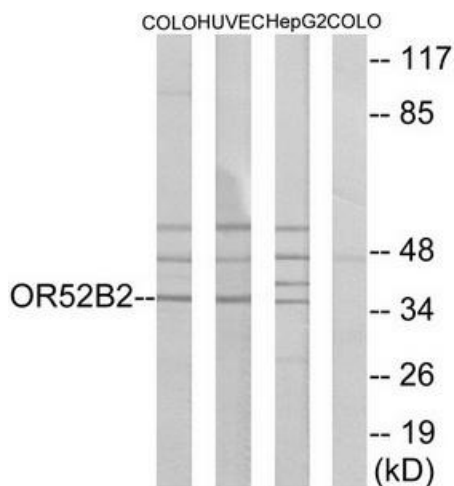
OR52B2 Rabbit Polyclonal Antibody

Product data:

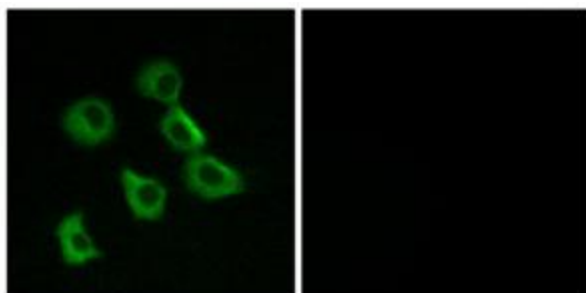
Product Type:	Primary Antibodies
Applications:	IF, WB
Recommended Dilution:	WB: 1:500~1:3000, IF: 1:100~1:500, ELISA: 1:1000
Reactivity:	Human
Host:	Rabbit
Isotype:	IgG
Clonality:	Polyclonal
Immunogen:	The antiserum was produced against synthesized peptide derived from internal of human OR52B2.
Formulation:	Phosphate buffered saline (without Mg ²⁺ and Ca ²⁺), pH 7.4, 150mM NaCl, 0.02% sodium azide and 50% glycerol.
Concentration:	lot specific
Purification:	The antibody was affinity-purified from rabbit antiserum by affinity-chromatography using epitope-specific immunogen.
Conjugation:	Unconjugated
Storage:	Store at -20°C as received.
Stability:	Stable for 12 months from date of receipt.
Gene Name:	olfactory receptor family 52 subfamily B member 2
Database Link:	NP_001004052 Entrez Gene 255725 Human Q96RD2
Synonyms:	OR11-70
Note:	OR52B2 antibody detects endogenous levels of total OR52B2 protein.
Protein Pathways:	Olfactory transduction



[View online »](#)

Product images:


Western blot analysis of extracts from COLO cells, HUVEC cells and HepG2 cells, using OR52B2 antibody. The lane on the right is treated with the synthesized peptide.



Immunofluorescence analysis of MCF-7 cells, using OR52B2 antibody. The picture on the right is treated with the synthesized peptide.