

Product datasheet for **TA316268**

Cell adhesion molecule 2 (CADM2) Rabbit Polyclonal Antibody

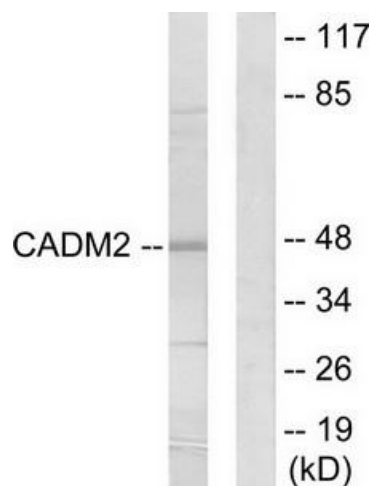
Product data:

Product Type:	Primary Antibodies
Applications:	WB
Recommended Dilution:	WB: 1:500~1:3000, ELISA: 1:10000
Reactivity:	Human, Mouse, Rat
Host:	Rabbit
Isotype:	IgG
Clonality:	Polyclonal
Immunogen:	The antiserum was produced against synthesized peptide derived from internal of human CADM2.
Formulation:	Phosphate buffered saline (without Mg ²⁺ and Ca ²⁺), pH 7.4, 150mM NaCl, 0.02% sodium azide and 50% glycerol.
Concentration:	lot specific
Purification:	The antibody was affinity-purified from rabbit antiserum by affinity-chromatography using epitope-specific immunogen.
Conjugation:	Unconjugated
Storage:	Store at -20°C as received.
Stability:	Stable for 12 months from date of receipt.
Gene Name:	cell adhesion molecule 2
Database Link:	NP_001161146 Entrez Gene 239857 MouseEntrez Gene 360687 RatEntrez Gene 253559 Human Q8N3J6
Synonyms:	IGSF4D; Necl-3; NECL3; SynCAM 2; synCAM2
Note:	CADM2 antibody detects endogenous levels of total CADM2 protein.
Protein Families:	Druggable Genome, Transmembrane



[View online »](#)

Product images:



Western blot analysis of extracts from HepG2 cells, using CADM2 antibody. The lane on the right is treated with the synthesized peptide.