

Product datasheet for **TA316267**

CDY1B Rabbit Polyclonal Antibody

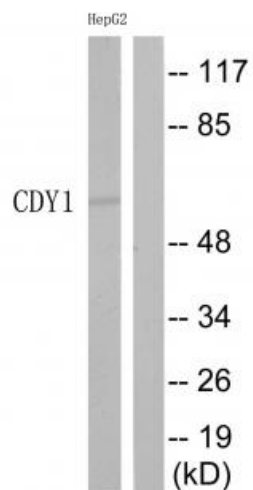
Product data:

Product Type:	Primary Antibodies
Applications:	WB
Recommended Dilution:	WB: 1:500~1:3000, ELISA: 1:10000
Reactivity:	Human
Host:	Rabbit
Isotype:	IgG
Clonality:	Polyclonal
Immunogen:	The antiserum was produced against synthesized peptide derived from Internal of human CDY1.
Formulation:	Phosphate buffered saline (without Mg ²⁺ and Ca ²⁺), pH 7.4, 150mM NaCl, 0.02% sodium azide and 50% glycerol.
Concentration:	lot specific
Purification:	The antibody was affinity-purified from rabbit antiserum by affinity-chromatography using epitope-specific immunogen.
Conjugation:	Unconjugated
Storage:	Store at -20°C as received.
Stability:	Stable for 12 months from date of receipt.
Gene Name:	chromodomain protein, Y-linked, 1B
Database Link:	NP_001003894 Entrez Gene 253175 Human Q9Y6F8
Synonyms:	CDY
Note:	CDY1 antibody detects endogenous levels of total CDY1 protein.



[View online »](#)

Product images:



Western blot analysis of extracts from HepG2 cells, using CDY1 antibody. The lane on the right is treated with the synthesized peptide.