

Product datasheet for **TA316265**

ATP6V1C2 Rabbit Polyclonal Antibody

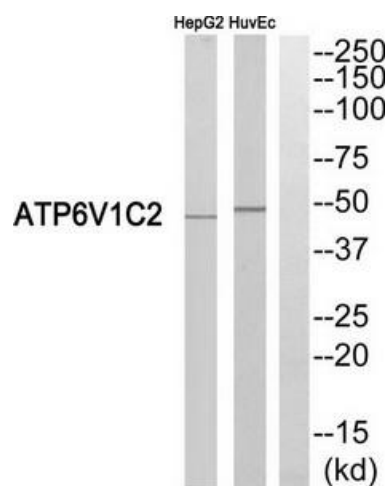
Product data:

Product Type:	Primary Antibodies
Applications:	WB
Recommended Dilution:	WB: 1:500~1:3000, ELISA: 1:20000
Reactivity:	Human
Host:	Rabbit
Isotype:	IgG
Clonality:	Polyclonal
Immunogen:	The antiserum was produced against synthesized peptide derived from internal of human ATP6V1C2.
Formulation:	Phosphate buffered saline (without Mg ²⁺ and Ca ²⁺), pH 7.4, 150mM NaCl, 0.02% sodium azide and 50% glycerol.
Concentration:	lot specific
Purification:	The antibody was affinity-purified from rabbit antiserum by affinity-chromatography using epitope-specific immunogen.
Conjugation:	Unconjugated
Storage:	Store at -20°C as received.
Stability:	Stable for 12 months from date of receipt.
Gene Name:	ATPase H ⁺ transporting V1 subunit C2
Database Link:	NP_001034451 Entrez Gene 245973 Human Q8NEY4
Synonyms:	ATP6C2; VMA5
Note:	ATP6V1C2 antibody detects endogenous levels of total ATP6V1C2 protein.
Protein Pathways:	Epithelial cell signaling in Helicobacter pylori infection, Metabolic pathways, Oxidative phosphorylation, Vibrio cholerae infection



[View online »](#)

Product images:



Western blot analysis of extracts from HepG2 cells and HUVEC cells, using ATP6V1C2 antibody. The lane on the right is treated with the synthesized peptide.