

## Product datasheet for **TA316257**

### **ZNF498 (ZSCAN25) Rabbit Polyclonal Antibody**

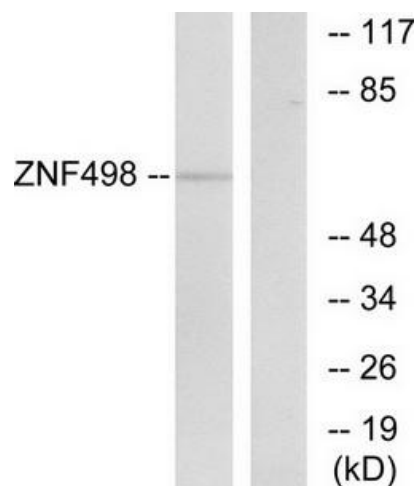
#### **Product data:**

Product Type:	Primary Antibodies
Applications:	WB
Recommended Dilution:	WB: 1:500~1:3000, ELISA: 1:40000
Reactivity:	Human
Host:	Rabbit
Isotype:	IgG
Clonality:	Polyclonal
Immunogen:	The antiserum was produced against synthesized peptide derived from internal of human ZNF498.
Formulation:	Phosphate buffered saline (without Mg <sup>2+</sup> and Ca <sup>2+</sup> ), pH 7.4, 150mM NaCl, 0.02% sodium azide and 50% glycerol.
Concentration:	lot specific
Purification:	The antibody was affinity-purified from rabbit antiserum by affinity-chromatography using epitope-specific immunogen.
Conjugation:	Unconjugated
Storage:	Store at -20°C as received.
Stability:	Stable for 12 months from date of receipt.
Gene Name:	zinc finger and SCAN domain containing 25
Database Link:	<a href="#">NP_660090</a> <a href="#">Entrez Gene 221785 Human</a> <a href="#">Q6NSZ9</a>
Synonyms:	ZNF498
Note:	ZNF498 antibody detects endogenous levels of total ZNF498 protein.
Protein Families:	Transcription Factors



[View online »](#)

Product images:



Western blot analysis of extracts from COS-7 cells, using ZNF498 antibody. The lane on the right is treated with the synthesized peptide.