

Product datasheet for **TA316255**

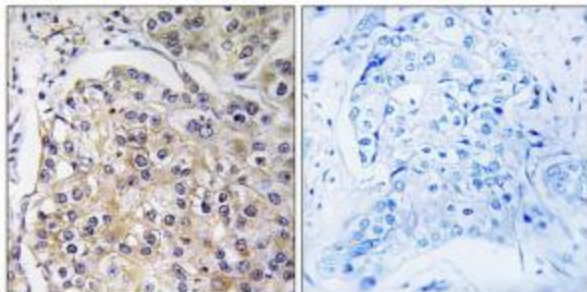
GPR116 (ADGRF5) Rabbit Polyclonal Antibody

Product data:

Product Type:	Primary Antibodies
Applications:	IF, IHC
Recommended Dilution:	IHC: 1:50~1:100, IF: 1:100~1:500, ELISA: 1:40000
Reactivity:	Human, Mouse, Rat
Host:	Rabbit
Isotype:	IgG
Clonality:	Polyclonal
Immunogen:	The antiserum was produced against synthesized peptide derived from internal of human GPR116.
Formulation:	Phosphate buffered saline (without Mg ²⁺ and Ca ²⁺), pH 7.4, 150mM NaCl, 0.02% sodium azide and 50% glycerol.
Concentration:	lot specific
Purification:	The antibody was affinity-purified from rabbit antiserum by affinity-chromatography using epitope-specific immunogen.
Conjugation:	Unconjugated
Storage:	Store at -20°C as received.
Stability:	Stable for 12 months from date of receipt.
Gene Name:	adhesion G protein-coupled receptor F5
Database Link:	NP_056049 Entrez Gene 224792 MouseEntrez Gene 245977 RatEntrez Gene 221395 Human Q8IZF2
Synonyms:	GPR116; KPG_001
Note:	GPR116 antibody detects endogenous levels of total GPR116 protein.
Protein Families:	Druggable Genome, GPCR, Transmembrane



[View online »](#)

Product images:

Immunohistochemistry analysis of paraffin-embedded human breast carcinoma tissue using GPR116 antibody. The picture on the right is treated with the synthesized peptide.



Immunofluorescence analysis of A549 cells, using GPR116 antibody. The picture on the right is treated with the synthesized peptide.