

## Product datasheet for **TA316253**

### GPR115 (ADGRF4) Rabbit Polyclonal Antibody

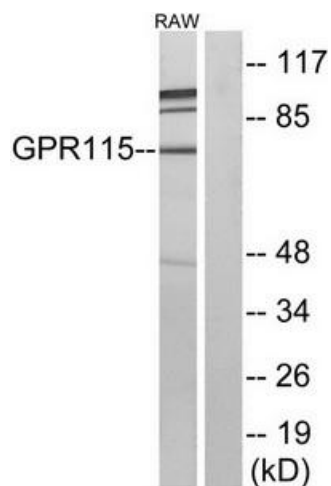
#### Product data:

Product Type:	Primary Antibodies
Applications:	IF, WB
Recommended Dilution:	WB: 1:500~1:3000, IF: 1:100~1:500, ELISA: 1:10000
Reactivity:	Human, Mouse
Host:	Rabbit
Isotype:	IgG
Clonality:	Polyclonal
Immunogen:	The antiserum was produced against synthesized peptide derived from C-terminal of human GPR115.
Formulation:	Phosphate buffered saline (without Mg <sup>2+</sup> and Ca <sup>2+</sup> ), pH 7.4, 150mM NaCl, 0.02% sodium azide and 50% glycerol.
Concentration:	lot specific
Purification:	The antibody was affinity-purified from rabbit antiserum by affinity-chromatography using epitope-specific immunogen.
Conjugation:	Unconjugated
Storage:	Store at -20°C as received.
Stability:	Stable for 12 months from date of receipt.
Gene Name:	adhesion G protein-coupled receptor F4
Database Link:	<a href="#">NP_722580</a> <a href="#">Entrez Gene 78249 Mouse</a> <a href="#">Entrez Gene 221393 Human</a> <a href="#">Q8IZF3</a>
Synonyms:	GPR115; PGR18
Note:	GPR115 antibody detects endogenous levels of total GPR115 protein.
Protein Families:	Druggable Genome, Transmembrane

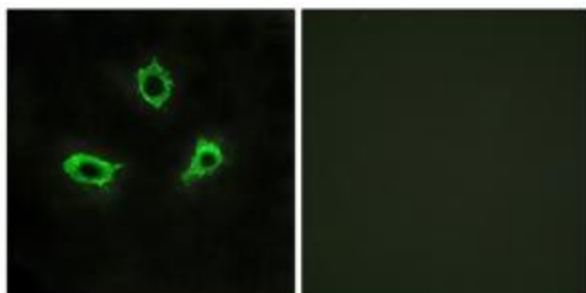


[View online »](#)

## Product images:



Western blot analysis of extracts from RAW264.7 cells, using GPR115 antibody. The lane on the right is treated with the synthesized peptide.



Immunofluorescence analysis of LOVO cells, using GPR115 antibody. The picture on the right is treated with the synthesized peptide.