

Product datasheet for **TA316252**

GPR136 (OPN5) Rabbit Polyclonal Antibody

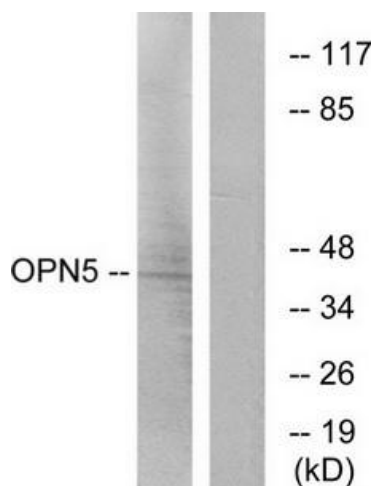
Product data:

Product Type:	Primary Antibodies
Applications:	IF, WB
Recommended Dilution:	WB: 1:500~1:3000, IF: 1:100~1:500, ELISA: 1:5000
Reactivity:	Human, Mouse
Host:	Rabbit
Isotype:	IgG
Clonality:	Polyclonal
Immunogen:	The antiserum was produced against synthesized peptide derived from internal of human OPN5.
Formulation:	Phosphate buffered saline (without Mg ²⁺ and Ca ²⁺), pH 7.4, 150mM NaCl, 0.02% sodium azide and 50% glycerol.
Concentration:	lot specific
Purification:	The antibody was affinity-purified from rabbit antiserum by affinity-chromatography using epitope-specific immunogen.
Conjugation:	Unconjugated
Storage:	Store at -20°C as received.
Stability:	Stable for 12 months from date of receipt.
Gene Name:	opsin 5
Database Link:	NP_001025222 Entrez Gene 353344 Mouse Entrez Gene 221391 Human Q6U736
Synonyms:	NEUROPSIN; opsin 5; OTTHUMP00000016565; OTTHUMP00000039910; PGR12; TMEM13; transmembrane protein 13
Note:	OPN5 antibody detects endogenous levels of total OPN5 protein.
Protein Families:	Druggable Genome, Transmembrane

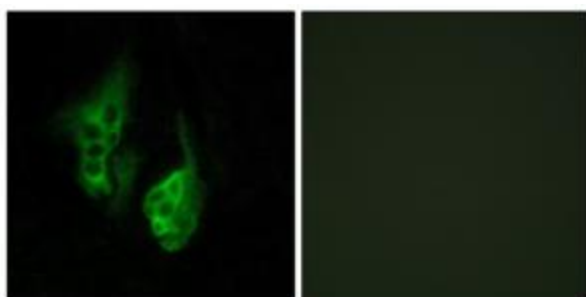


[View online »](#)

Product images:



Western blot analysis of extracts from Jurkat cells, using OPN5 antibody. The lane on the right is treated with the synthesized peptide.



Immunofluorescence analysis of HeLa cells, using OPN5 antibody. The picture on the right is treated with the synthesized peptide.