

Product datasheet for **TA316248**

DOK6 Rabbit Polyclonal Antibody

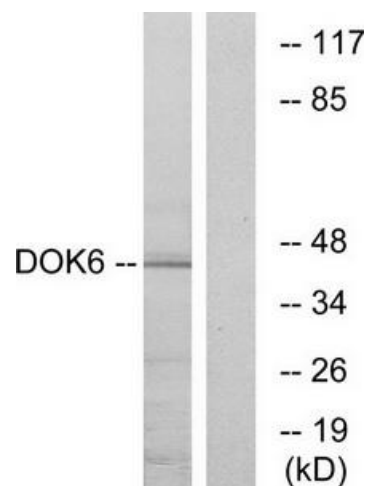
Product data:

Product Type:	Primary Antibodies
Applications:	IF, WB
Recommended Dilution:	WB: 1:500~1:3000, IF: 1:100~1:500, ELISA: 1:10000
Reactivity:	Human, Mouse
Host:	Rabbit
Isotype:	IgG
Clonality:	Polyclonal
Immunogen:	The antiserum was produced against synthesized peptide derived from internal of human DOK6.
Formulation:	Phosphate buffered saline (without Mg ²⁺ and Ca ²⁺), pH 7.4, 150mM NaCl, 0.02% sodium azide and 50% glycerol.
Concentration:	lot specific
Purification:	The antibody was affinity-purified from rabbit antiserum by affinity-chromatography using epitope-specific immunogen.
Conjugation:	Unconjugated
Storage:	Store at -20°C as received.
Stability:	Stable for 12 months from date of receipt.
Gene Name:	docking protein 6
Database Link:	NP_689934 Entrez Gene 623279 Mouse Entrez Gene 220164 Human Q6PKX4
Synonyms:	DOK5L; HsT3226
Note:	DOK6 antibody detects endogenous levels of total DOK6 protein.
Protein Families:	Druggable Genome

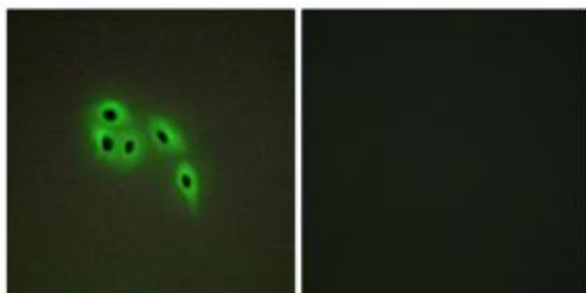


[View online »](#)

Product images:



Western blot analysis of extracts from COLO cells, using DOK6 antibody. The lane on the right is treated with the synthesized peptide.



Immunofluorescence analysis of A549 cells, using DOK6 antibody. The picture on the right is treated with the synthesized peptide.