

## Product datasheet for **TA316246**

### OR4D6 Rabbit Polyclonal Antibody

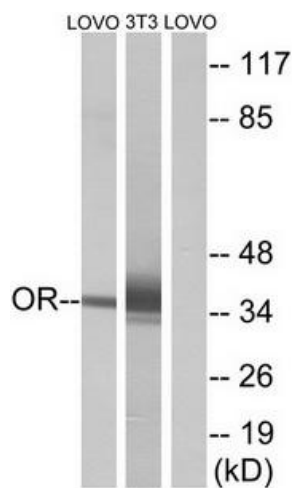
#### Product data:

Product Type:	Primary Antibodies
Applications:	WB
Recommended Dilution:	WB: 1:500~1:3000, ELISA: 1:20000
Reactivity:	Human
Host:	Rabbit
Isotype:	IgG
Clonality:	Polyclonal
Immunogen:	The antiserum was produced against synthesized peptide derived from C-terminal of human OR.
Formulation:	Phosphate buffered saline (without Mg <sup>2+</sup> and Ca <sup>2+</sup> ), pH 7.4, 150mM NaCl, 0.02% sodium azide and 50% glycerol.
Concentration:	lot specific
Purification:	The antibody was affinity-purified from rabbit antiserum by affinity-chromatography using epitope-specific immunogen.
Conjugation:	Unconjugated
Storage:	Store at -20°C as received.
Stability:	Stable for 12 months from date of receipt.
Gene Name:	olfactory receptor family 4 subfamily D member 6
Database Link:	<a href="#">NP_001004708</a> <a href="#">Entrez Gene 219983 Human</a> <a href="#">Q8NGI1</a>
Synonyms:	OR11-250
Note:	OR antibody detects endogenous levels of total OR protein.
Protein Families:	Transmembrane
Protein Pathways:	Olfactory transduction



[View online »](#)

## Product images:



Western blot analysis of extracts from LOVO cells and NIH-3T3 cells, using OR antibody. The lane on the right is treated with the synthesized peptide.