

Product datasheet for **TA316244**

OR5A2 Rabbit Polyclonal Antibody

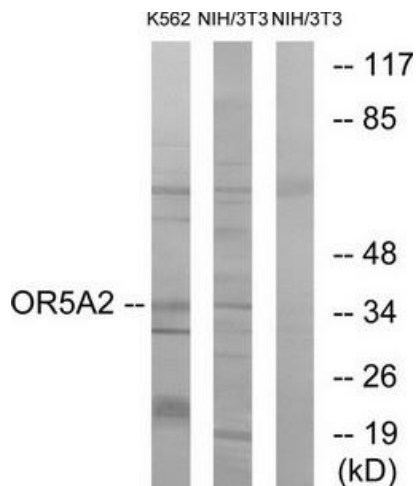
Product data:

Product Type:	Primary Antibodies
Applications:	IF, WB
Recommended Dilution:	WB: 1:500~1:3000, IF: 1:100~1:500, ELISA: 1:10000
Reactivity:	Human
Host:	Rabbit
Isotype:	IgG
Clonality:	Polyclonal
Immunogen:	The antiserum was produced against synthesized peptide derived from C-terminal of human OR5A2.
Formulation:	Phosphate buffered saline (without Mg ²⁺ and Ca ²⁺), pH 7.4, 150mM NaCl, 0.02% sodium azide and 50% glycerol.
Concentration:	lot specific
Purification:	The antibody was affinity-purified from rabbit antiserum by affinity-chromatography using epitope-specific immunogen.
Conjugation:	Unconjugated
Storage:	Store at -20°C as received.
Stability:	Stable for 12 months from date of receipt.
Gene Name:	olfactory receptor family 5 subfamily A member 2
Database Link:	NP_001001954 Entrez Gene 219981 Human Q8NGI9
Synonyms:	family 5; member 2; olfactory receptor; olfactory receptor OR11-248; subfamily A
Note:	OR5A2 antibody detects endogenous levels of total OR5A2 protein.
Protein Families:	Transmembrane
Protein Pathways:	Olfactory transduction

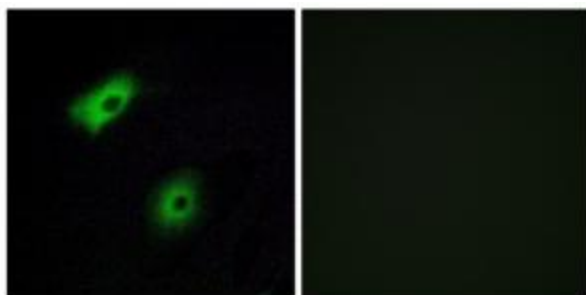


[View online »](#)

Product images:



Western blot analysis of extracts from K562 cells and NIH/3T3 cells, using OR5A2 antibody. The lane on the right is treated with the synthesized peptide.



Immunofluorescence analysis of A549 cells, using OR5A2 antibody. The picture on the right is treated with the synthesized peptide.