

Product datasheet for **TA316239**

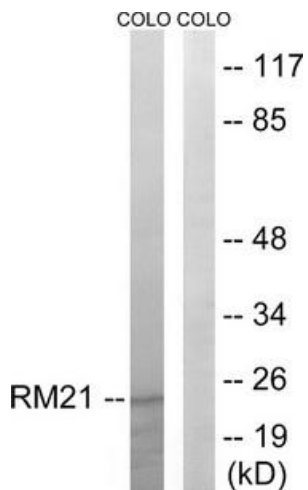
MRPL21 Rabbit Polyclonal Antibody

Product data:

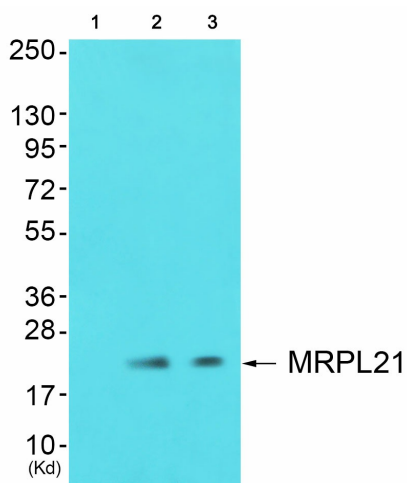
Product Type:	Primary Antibodies
Applications:	IHC, WB
Recommended Dilution:	WB: 1:500~1:3000, IHC: 1:50~1:100, ELISA: 1:40000
Reactivity:	Human, Mouse
Host:	Rabbit
Isotype:	IgG
Clonality:	Polyclonal
Immunogen:	The antiserum was produced against synthesized peptide derived from internal of human MRPL21.
Formulation:	Phosphate buffered saline (without Mg ²⁺ and Ca ²⁺), pH 7.4, 150mM NaCl, 0.02% sodium azide and 50% glycerol.
Concentration:	lot specific
Purification:	The antibody was affinity-purified from rabbit antiserum by affinity-chromatography using epitope-specific immunogen.
Conjugation:	Unconjugated
Storage:	Store at -20°C as received.
Stability:	Stable for 12 months from date of receipt.
Gene Name:	mitochondrial ribosomal protein L21
Database Link:	NP_852615 Entrez Gene 353242 Mouse Entrez Gene 219927 Human Q7Z2W9
Synonyms:	L21mt; MRP-L21
Note:	MRPL21 antibody detects endogenous levels of total MRPL21 protein.



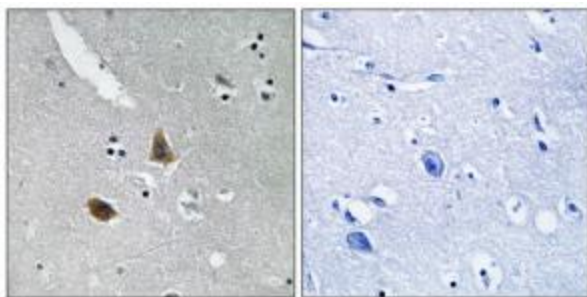
[View online »](#)

Product images:


Western blot analysis of extracts from COLO cells, using MRPL21 antibody. The lane on the right is treated with the synthesized peptide.



Western blot analysis of extracts from HepG2 cells (Lane 2) and 3T3 cells (Lane 3), using MRPL21 Antibody. The lane on the left is treated with synthesized peptide.



Immunohistochemistry analysis of paraffin-embedded human brain tissue using MRPL21 antibody. The picture on the right is treated with the synthesized peptide.