

Product datasheet for **TA316233**

OR5M11 Rabbit Polyclonal Antibody

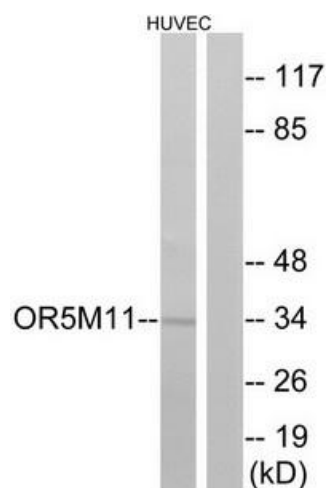
Product data:

Product Type:	Primary Antibodies
Applications:	WB
Recommended Dilution:	WB: 1:500~1:3000, ELISA: 1:5000
Reactivity:	Human
Host:	Rabbit
Isotype:	IgG
Clonality:	Polyclonal
Immunogen:	The antiserum was produced against synthesized peptide derived from internal of humanOR5M11.
Formulation:	Phosphate buffered saline (without Mg ²⁺ and Ca ²⁺), pH 7.4, 150mM NaCl, 0.02% sodium azide and 50% glycerol.
Concentration:	lot specific
Purification:	The antibody was affinity-purified from rabbit antiserum by affinity-chromatography using epitope-specific immunogen.
Conjugation:	Unconjugated
Storage:	Store at -20°C as received.
Stability:	Stable for 12 months from date of receipt.
Gene Name:	olfactory receptor family 5 subfamily M member 11
Database Link:	NP_001005245 Entrez Gene 219487 Human Q96RB7
Synonyms:	OR11-199
Note:	OR5M11antibodydetects endogenous levels of totalOR5M11 protein.
Protein Pathways:	Olfactory transduction



[View online »](#)

Product images:



Western blot analysis of extracts from HUVEC cells, using OR5M11 antibody. The lane on the right is treated with the synthesized peptide.