

## Product datasheet for TA316232

### OR5M3 Rabbit Polyclonal Antibody

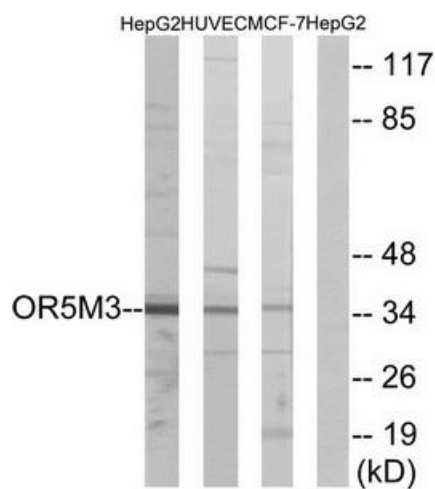
#### Product data:

Product Type:	Primary Antibodies
Applications:	IF, WB
Recommended Dilution:	WB: 1:500~1:3000, IF: 1:100~1:500, ELISA: 1:5000
Reactivity:	Human
Host:	Rabbit
Isotype:	IgG
Clonality:	Polyclonal
Immunogen:	The antiserum was produced against synthesized peptide derived from internal of human OR5M3.
Formulation:	Phosphate buffered saline (without Mg <sup>2+</sup> and Ca <sup>2+</sup> ), pH 7.4, 150mM NaCl, 0.02% sodium azide and 50% glycerol.
Concentration:	lot specific
Purification:	The antibody was affinity-purified from rabbit antiserum by affinity-chromatography using epitope-specific immunogen.
Conjugation:	Unconjugated
Storage:	Store at -20°C as received.
Stability:	Stable for 12 months from date of receipt.
Gene Name:	olfactory receptor family 5 subfamily M member 3
Database Link:	<a href="#">NP_001004742</a> <a href="#">Entrez Gene 219482 Human</a> <a href="#">Q8NGP4</a>
Synonyms:	OR11-191
Note:	OR5M3 antibody detects endogenous levels of total OR5M3 protein.

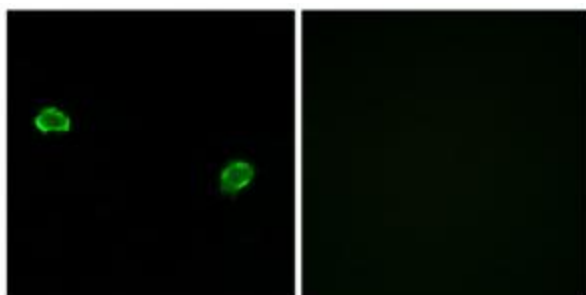


Protein Pathways: Olfactory transduction

**Product images:**



Western blot analysis of extracts from HepG2 cells, HUVEC cells and MCF-7 cells, using OR5M3 antibody. The lane on the right is treated with the synthesized peptide.



Immunofluorescence analysis of MCF-7 cells, using OR5M3 antibody. The picture on the right is treated with the synthesized peptide.