

Product datasheet for **TA316221**

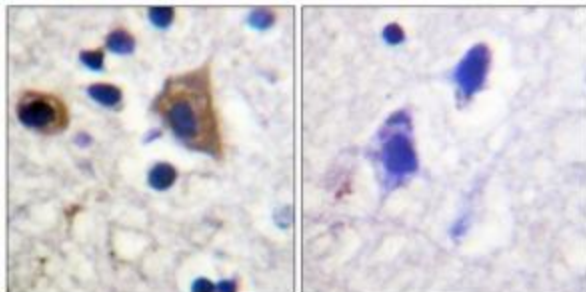
PIP5K3 (PIKFYVE) Rabbit Polyclonal Antibody

Product data:

Product Type:	Primary Antibodies
Applications:	IHC
Recommended Dilution:	IHC: 1:50~1:100, ELISA: 1:1000
Reactivity:	Human, Mouse, Rat
Host:	Rabbit
Isotype:	IgG
Clonality:	Polyclonal
Immunogen:	The antiserum was produced against synthesized peptide derived from Internal of human PIP5K.
Formulation:	Phosphate buffered saline (without Mg ²⁺ and Ca ²⁺), pH 7.4, 150mM NaCl, 0.02% sodium azide and 50% glycerol.
Concentration:	lot specific
Purification:	The antibody was affinity-purified from rabbit antiserum by affinity-chromatography using epitope-specific immunogen.
Conjugation:	Unconjugated
Storage:	Store at -20°C as received.
Stability:	Stable for 12 months from date of receipt.
Gene Name:	phosphoinositide kinase, FYVE-type zinc finger containing
Database Link:	NP_055855 Entrez Gene 18711 MouseEntrez Gene 316457 RatEntrez Gene 200576 Human Q9Y2I7
Synonyms:	CFD; FAB1; HEL37; PIP5K; PIP5K3; ZFYVE29
Note:	PIP5K antibody detects endogenous levels of total PIP5K protein.
Protein Families:	Druggable Genome
Protein Pathways:	Endocytosis, Fc gamma R-mediated phagocytosis, Inositol phosphate metabolism, Metabolic pathways, Phosphatidylinositol signaling system, Regulation of actin cytoskeleton



[View online »](#)

Product images:

Immunohistochemistry analysis of paraffin-embedded human brain tissue using PIP5K antibody. The picture on the right is treated with the synthesized peptide.