

Product datasheet for **TA316220**

PIP5K3 (PIKFYVE) Rabbit Polyclonal Antibody

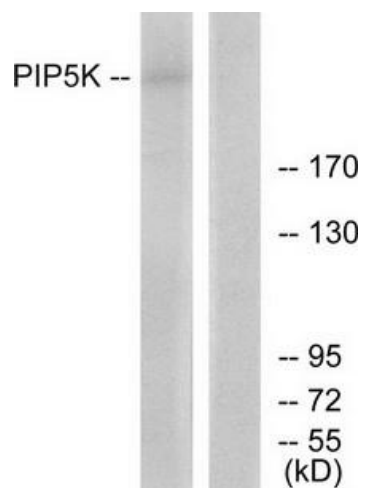
Product data:

Product Type:	Primary Antibodies
Applications:	IF, WB
Recommended Dilution:	WB: 1:500~1:3000, IF: 1:100~1:500, ELISA: 1:5000
Reactivity:	Human, Mouse
Host:	Rabbit
Isotype:	IgG
Clonality:	Polyclonal
Immunogen:	The antiserum was produced against synthesized peptide derived from internal of human PIP5K.
Formulation:	Phosphate buffered saline (without Mg ²⁺ and Ca ²⁺), pH 7.4, 150mM NaCl, 0.02% sodium azide and 50% glycerol.
Concentration:	lot specific
Purification:	The antibody was affinity-purified from rabbit antiserum by affinity-chromatography using epitope-specific immunogen.
Conjugation:	Unconjugated
Storage:	Store at -20°C as received.
Stability:	Stable for 12 months from date of receipt.
Gene Name:	phosphoinositide kinase, FYVE-type zinc finger containing
Database Link:	NP_055855 Entrez Gene 18711 Mouse Entrez Gene 200576 Human Q9Y2I7
Synonyms:	CFD; FAB1; HEL37; PIP5K; PIP5K3; ZFYVE29
Note:	PIP5K antibody detects endogenous levels of total PIP5K protein.
Protein Families:	Druggable Genome
Protein Pathways:	Endocytosis, Fc gamma R-mediated phagocytosis, Inositol phosphate metabolism, Metabolic pathways, Phosphatidylinositol signaling system, Regulation of actin cytoskeleton

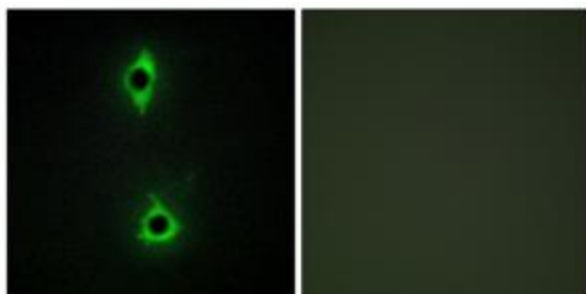


[View online »](#)

Product images:



Western blot analysis of extracts from HepG2 cells, using PIP5K antibody. The lane on the right is treated with the synthesized peptide.



Immunofluorescence analysis of COS7 cells, using PIP5K antibody. The picture on the right is treated with the synthesized peptide.