

Product datasheet for **TA316219**

APLF Rabbit Polyclonal Antibody

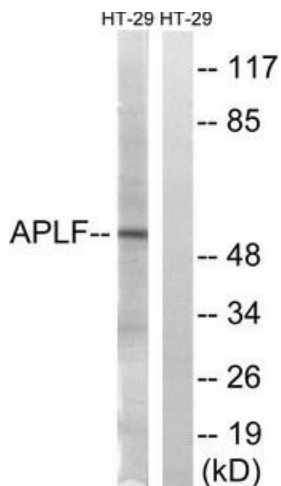
Product data:

Product Type:	Primary Antibodies
Applications:	IHC, WB
Recommended Dilution:	WB: 1:500~1:3000, IHC: 1:50~1:100, ELISA: 1:40000
Reactivity:	Human, Mouse
Host:	Rabbit
Isotype:	IgG
Clonality:	Polyclonal
Immunogen:	The antiserum was produced against synthesized non-phosphopeptide derived from human APLF around the phosphorylation site of serine 116 (R-N-SP-Q-V).
Formulation:	Phosphate buffered saline (without Mg ²⁺ and Ca ²⁺), pH 7.4, 150mM NaCl, 0.02% sodium azide and 50% glycerol.
Concentration:	lot specific
Purification:	The antibody was affinity-purified from rabbit antiserum by affinity-chromatography using epitope-specific immunogen.
Conjugation:	Unconjugated
Storage:	Store at -20°C as received.
Stability:	Stable for 12 months from date of receipt.
Gene Name:	apratxin and PNKP like factor
Database Link:	NP_775816 Entrez Gene 72103 Mouse Entrez Gene 200558 Human Q8IW19
Synonyms:	APFL; C2orf13; PALF; Xip1; ZCCHH1
Note:	APLF (Ab-116) antibody detects endogenous levels of total APLF protein.

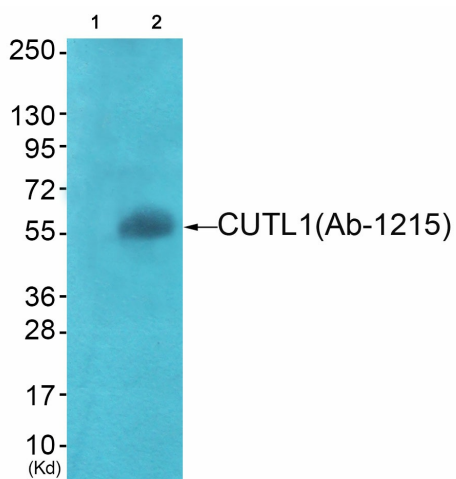


[View online »](#)

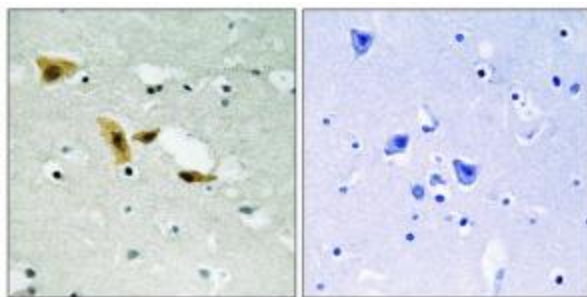
Product images:



Western blot analysis of extracts from HT-29 cells, using APLF (Ab-116) antibody. The lane on the right is treated with the synthesized peptide.



Western blot analysis of extracts from COS7 cells (Lane 2), using APLF (Ab-116) Antibody. The lane on the left is treated with synthesized peptide.



Immunohistochemistry analysis of paraffin-embedded human brain tissue using APLF (Ab-116) antibody. The picture on the right is treated with the synthesized peptide.