

Product datasheet for **TA316217**

FOXD4L1 Rabbit Polyclonal Antibody

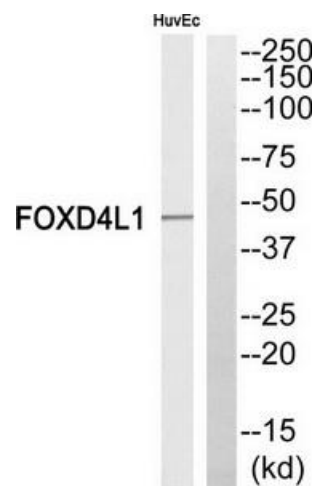
Product data:

Product Type:	Primary Antibodies
Applications:	WB
Recommended Dilution:	WB: 1:500~1:3000, ELISA: 1:40000
Reactivity:	Human
Host:	Rabbit
Isotype:	IgG
Clonality:	Polyclonal
Immunogen:	The antiserum was produced against synthesized peptide derived from C-terminal of human FOXD4L1.
Formulation:	Phosphate buffered saline (without Mg ²⁺ and Ca ²⁺), pH 7.4, 150mM NaCl, 0.02% sodium azide and 50% glycerol.
Concentration:	lot specific
Purification:	The antibody was affinity-purified from rabbit antiserum by affinity-chromatography using epitope-specific immunogen.
Conjugation:	Unconjugated
Storage:	Store at -20°C as received.
Stability:	Stable for 12 months from date of receipt.
Gene Name:	forkhead box D4-like 1
Database Link:	NP_036316 Entrez Gene 200350 Human Q9NU39
Synonyms:	bA395L14.1; FOXD5
Note:	FOXD4L1 antibody detects endogenous levels of total FOXD4L1 protein.



[View online »](#)

Product images:



Western blot analysis of extracts from HuvEc cells, using FOXD4L1 antibody. The lane on the right is treated with the synthesized peptide.