

## Product datasheet for **TA316214**

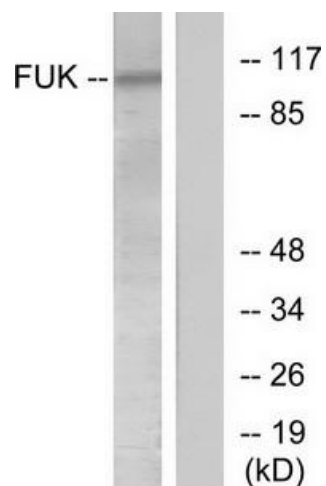
### FCSK Rabbit Polyclonal Antibody

#### Product data:

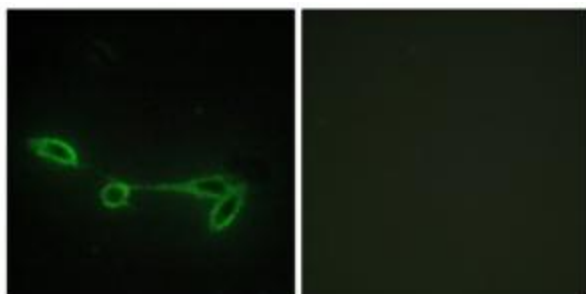
Product Type:	Primary Antibodies
Applications:	IF, WB
Recommended Dilution:	WB: 1:500~1:3000, IF: 1:100~1:500, ELISA: 1:20000
Reactivity:	Human, Mouse
Host:	Rabbit
Isotype:	IgG
Clonality:	Polyclonal
Immunogen:	The antibody was affinity-purified from rabbit antiserum by affinity-chromatography using epitope-specific immunogen.
Formulation:	Phosphate buffered saline (without Mg <sup>2+</sup> and Ca <sup>2+</sup> ), pH 7.4, 150mM NaCl, 0.02% sodium azide and 50% glycerol.
Concentration:	lot specific
Purification:	The antibody was affinity-purified from rabbit antiserum by affinity-chromatography using epitope-specific immunogen.
Conjugation:	Unconjugated
Storage:	Store at -20°C as received.
Stability:	Stable for 12 months from date of receipt.
Gene Name:	fucokinase
Database Link:	<a href="#">NP_659496</a> <a href="#">Entrez Gene 234730 Mouse</a> <a href="#">Entrez Gene 197258 Human</a> <a href="#">Q8N0W3</a>
Synonyms:	1110046B12Rik
Note:	FUK antibody detects endogenous levels of total FUK protein.
Protein Families:	Druggable Genome
Protein Pathways:	Amino sugar and nucleotide sugar metabolism, Fructose and mannose metabolism, Metabolic pathways



[View online »](#)

**Product images:**

Western blot analysis of extracts from COS-7 cells, treated with insulin (0.01U/ml, 45mins), using FUK antibody. The lane on the right is treated with the synthesized peptide.



Immunofluorescence analysis of NIH/3T3 cells, using FUK antibody. The picture on the right is treated with the synthesized peptide.