

Product datasheet for **TA316212**

ADCY4 Rabbit Polyclonal Antibody

Product data:

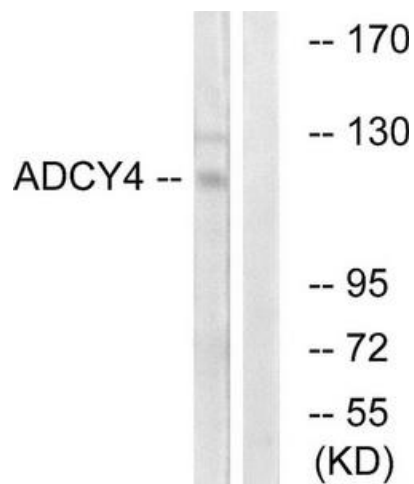
Product Type:	Primary Antibodies
Applications:	WB
Recommended Dilution:	WB: 1:500~1:3000, ELISA: 1:20000
Reactivity:	Human, Mouse, Rat
Host:	Rabbit
Isotype:	IgG
Clonality:	Polyclonal
Immunogen:	The antiserum was produced against synthesized peptide derived from internal of human ADCY4.
Formulation:	Phosphate buffered saline (without Mg ²⁺ and Ca ²⁺), pH 7.4, 150mM NaCl, 0.02% sodium azide and 50% glycerol.
Concentration:	lot specific
Purification:	The antibody was affinity-purified from rabbit antiserum by affinity-chromatography using epitope-specific immunogen.
Conjugation:	Unconjugated
Storage:	Store at -20°C as received.
Stability:	Stable for 12 months from date of receipt.
Gene Name:	adenylate cyclase 4
Database Link:	NP_640340 Entrez Gene 54223 Rat Entrez Gene 104110 Mouse Entrez Gene 196883 Human Q8NFM4
Synonyms:	AC4
Note:	ADCY4 antibody detects endogenous levels of total ADCY4 protein.
Protein Families:	Druggable Genome, Transmembrane



[View online »](#)

Protein Pathways:

Calcium signaling pathway, Chemokine signaling pathway, Dilated cardiomyopathy, Gap junction, GnRH signaling pathway, Melanogenesis, Oocyte meiosis, Progesterone-mediated oocyte maturation, Purine metabolism, Taste transduction, Vascular smooth muscle contraction

Product images:

Western blot analysis of extracts from Jurkat cells, using ADCY4 antibody. The lane on the right is treated with the synthesized peptide.