

## Product datasheet for **TA316202**

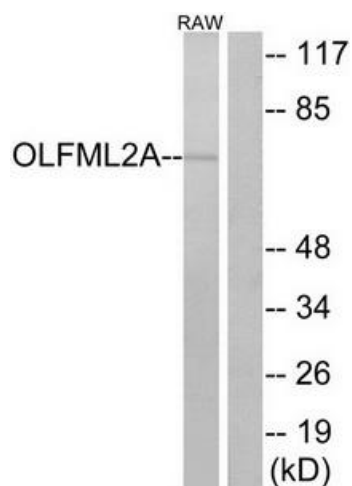
### OLFML2A Rabbit Polyclonal Antibody

#### Product data:

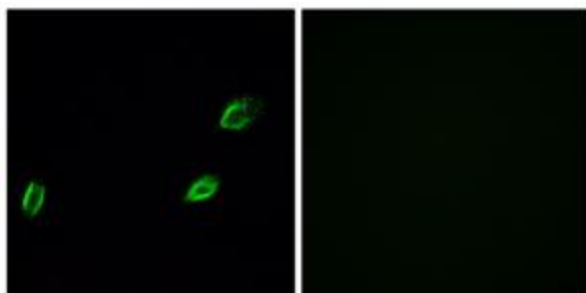
|                       |  |
|-----------------------|--|
| Product Type:         | Primary Antibodies   |
| Applications:         | IF, WB   |
| Recommended Dilution: | WB: 1:500~1:3000, IF: 1:100~1:500, ELISA: 1:10000  |
| Reactivity:           | Human  |
| Host:                 | Rabbit   |
| Isotype:              | IgG  |
| Clonality:            | Polyclonal   |
| Immunogen:            | The antiserum was produced against synthesized peptide derived from internal of human OLFML2A.                                       |
| Formulation:          | Phosphate buffered saline (without Mg <sup>2+</sup> and Ca <sup>2+</sup> ), pH 7.4, 150mM NaCl, 0.02% sodium azide and 50% glycerol. |
| Concentration:        | lot specific   |
| Purification:         | The antibody was affinity-purified from rabbit antiserum by affinity-chromatography using epitope-specific immunogen.                |
| Conjugation:          | Unconjugated   |
| Storage:              | Store at -20°C as received.  |
| Stability:            | Stable for 12 months from date of receipt.   |
| Gene Name:            | olfactomedin like 2A   |
| Database Link:        | <a href="#">NP_872293</a><br><a href="#">Entrez Gene 169611 Human</a><br><a href="#">Q68BL7</a>                                      |
| Synonyms:             | PRO34319   |
| Note:                 | OLFML2A antibody detects endogenous levels of total OLFML2A protein.   |
| Protein Families:     | Druggable Genome   |



[View online »](#)

**Product images:**

Western blot analysis of extracts from RAW264.7 cells, using OLFML2A antibody. The lane on the right is treated with the synthesized peptide.



Immunofluorescence analysis of A549 cells, using OLFML2A antibody. The picture on the right is treated with the synthesized peptide.