

Product datasheet for **TA316201**

KCNV2 Rabbit Polyclonal Antibody

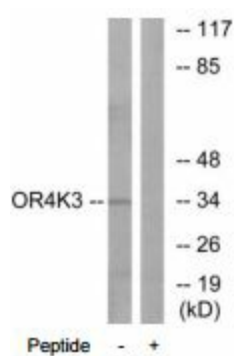
Product data:

Product Type:	Primary Antibodies
Applications:	IF, WB
Recommended Dilution:	WB: 1:500~1:3000, IF: 1:100~1:500, ELISA: 1:40000
Reactivity:	Human
Host:	Rabbit
Isotype:	IgG
Clonality:	Polyclonal
Immunogen:	The antiserum was produced against synthesized peptide derived from internal of human OR4K3.
Formulation:	Phosphate buffered saline (without Mg ²⁺ and Ca ²⁺), pH 7.4, 150mM NaCl, 0.02% sodium azide and 50% glycerol.
Concentration:	lot specific
Purification:	The antibody was affinity-purified from rabbit antiserum by affinity-chromatography using epitope-specific immunogen.
Conjugation:	Unconjugated
Storage:	Store at -20°C as received.
Stability:	Stable for 12 months from date of receipt.
Gene Name:	potassium voltage-gated channel modifier subfamily V member 2
Database Link:	NP_598004 Entrez Gene 169522 Human Q8TDN2
Synonyms:	Kv8.2; KV11.1; RCD3B
Note:	OR4K3 antibody detects endogenous levels of total OR4K3 protein.
Protein Families:	Druggable Genome, Ion Channels: Potassium, Transmembrane

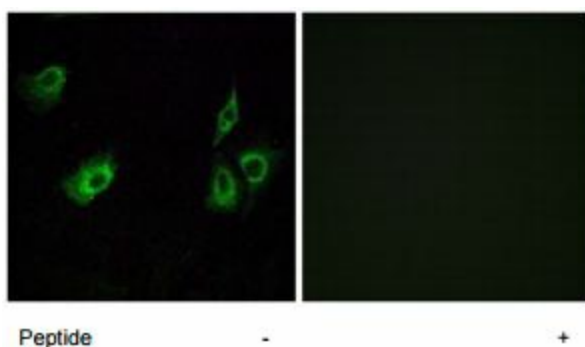


[View online »](#)

Product images:



Western blot analysis of extracts from Jurkat cells, using OR4K3 antibody. The lane on the right is treated with the synthesized peptide.



Immunofluorescence analysis of A549 cells, using OR4K3 antibody. The picture on the right is treated with the synthesized peptide.