

Product datasheet for **TA316196**

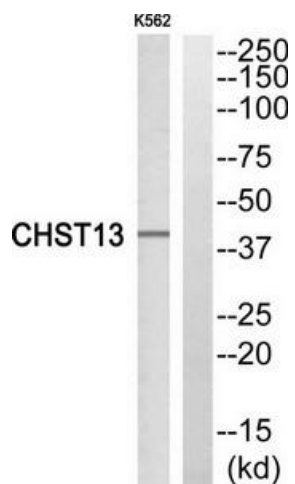
CHST13 Rabbit Polyclonal Antibody

Product data:

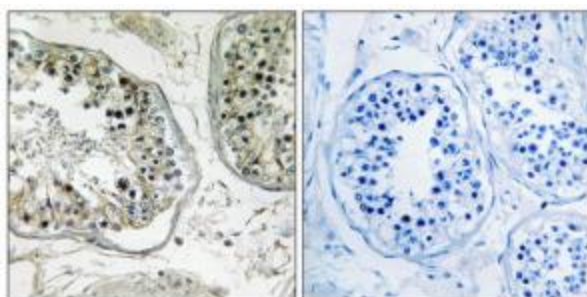
Product Type:	Primary Antibodies
Applications:	IHC, WB
Recommended Dilution:	WB: 1:500~1:3000, IHC: 1:50~1:100, ELISA: 1:40000
Reactivity:	Human
Host:	Rabbit
Isotype:	IgG
Clonality:	Polyclonal
Immunogen:	The antiserum was produced against synthesized peptide derived from internal of human CHST13.
Formulation:	Phosphate buffered saline (without Mg ²⁺ and Ca ²⁺), pH 7.4, 150mM NaCl, 0.02% sodium azide and 50% glycerol.
Concentration:	lot specific
Purification:	The antibody was affinity-purified from rabbit antiserum by affinity-chromatography using epitope-specific immunogen.
Conjugation:	Unconjugated
Storage:	Store at -20°C as received.
Stability:	Stable for 12 months from date of receipt.
Gene Name:	carbohydrate sulfotransferase 13
Database Link:	NP_690849 Entrez Gene 166012 Human Q8NET6
Synonyms:	C4ST3
Note:	CHST13 antibody detects endogenous levels of total CHST13 protein.
Protein Families:	Transmembrane
Protein Pathways:	Chondroitin sulfate biosynthesis, Sulfur metabolism



[View online »](#)

Product images:

Western blot analysis of extracts from K562 cells, using CHST13 antibody. The lane on the right is treated with the synthesized peptide.



Immunohistochemistry analysis of paraffin-embedded human testis tissue, using CHST13 antibody. The picture on the right is treated with the synthesized peptide.