

## Product datasheet for **TA316193**

### C1QL2 Rabbit Polyclonal Antibody

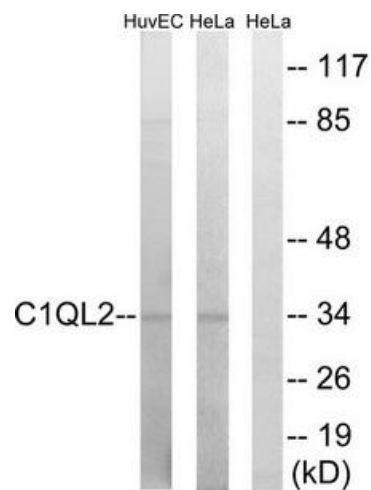
#### Product data:

|                       |  |
|-----------------------|--|
| Product Type:         | Primary Antibodies   |
| Applications:         | WB   |
| Recommended Dilution: | WB: 1:500~1:3000, ELISA: 1:10000   |
| Reactivity:           | Human, Mouse   |
| Host:                 | Rabbit   |
| Isotype:              | IgG  |
| Clonality:            | Polyclonal   |
| Immunogen:            | The antiserum was produced against synthesized peptide derived from internal of human C1QL2.   |
| Formulation:          | Phosphate buffered saline (without Mg <sup>2+</sup> and Ca <sup>2+</sup> ), pH 7.4, 150mM NaCl, 0.02% sodium azide and 50% glycerol.     |
| Concentration:        | lot specific   |
| Purification:         | The antibody was affinity-purified from rabbit antiserum by affinity-chromatography using epitope-specific immunogen.                    |
| Conjugation:          | Unconjugated   |
| Storage:              | Store at -20°C as received.  |
| Stability:            | Stable for 12 months from date of receipt.   |
| Gene Name:            | complement component 1, q subcomponent-like 2  |
| Database Link:        | <a href="#">NP_872334</a><br><a href="#">Entrez Gene 226359 Mouse</a> <a href="#">Entrez Gene 165257 Human</a><br><a href="#">Q7Z5L3</a> |
| Synonyms:             | C1QTNF10; CTRP10   |
| Note:                 | C1QL2 antibody detects endogenous levels of total C1QL2 protein.   |
| Protein Families:     | Secreted Protein   |



[View online »](#)

## Product images:



Western blot analysis of extracts from HUVEC cells and HeLa cells, using C1QL2 antibody. The lane on the right is treated with the synthesized peptide.