

Product datasheet for **TA316184**

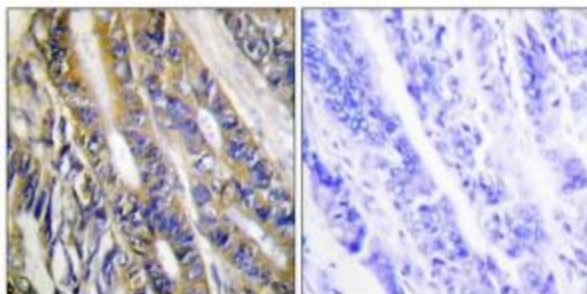
DGKH Rabbit Polyclonal Antibody

Product data:

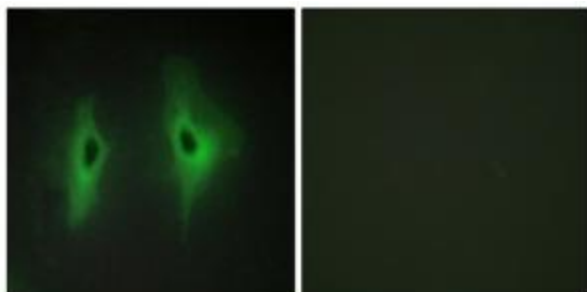
Product Type:	Primary Antibodies
Applications:	IF, IHC
Recommended Dilution:	IHC: 1:50~1:100, IF: 1:100~1:500, ELISA: 1:5000
Reactivity:	Human, Mouse
Host:	Rabbit
Isotype:	IgG
Clonality:	Polyclonal
Immunogen:	The antiserum was produced against synthesized peptide derived from internal of human DGKH.
Formulation:	Phosphate buffered saline (without Mg ²⁺ and Ca ²⁺), pH 7.4, 150mM NaCl, 0.02% sodium azide and 50% glycerol.
Concentration:	lot specific
Purification:	The antibody was affinity-purified from rabbit antiserum by affinity-chromatography using epitope-specific immunogen.
Conjugation:	Unconjugated
Storage:	Store at -20°C as received.
Stability:	Stable for 12 months from date of receipt.
Gene Name:	diacylglycerol kinase eta
Database Link:	NP_821077 Entrez Gene 380921 Mouse Entrez Gene 160851 Human Q86XP1
Synonyms:	DGKeta
Note:	DGKH antibody detects endogenous levels of total DGKH protein
Protein Families:	Druggable Genome
Protein Pathways:	Glycerolipid metabolism, Glycerophospholipid metabolism, Metabolic pathways, Phosphatidylinositol signaling system



[View online »](#)

Product images:

Immunohistochemistry analysis of paraffin-embedded human colon carcinoma tissue, using DGKH antibody. The picture on the right is treated with the synthesized peptide.



Immunofluorescence analysis of HeLa cells, using DGKH antibody. The picture on the right is treated with the synthesized peptide.