

Product datasheet for **TA316179**

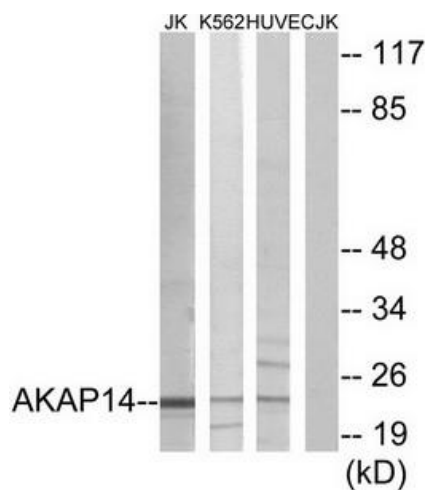
AKAP14 Rabbit Polyclonal Antibody

Product data:

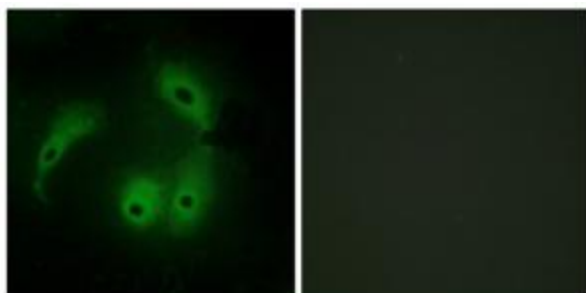
Product Type:	Primary Antibodies
Applications:	IF, WB
Recommended Dilution:	WB: 1:500~1:3000, IF: 1:100~1:500, ELISA: 1:5000
Reactivity:	Human
Host:	Rabbit
Isotype:	IgG
Clonality:	Polyclonal
Immunogen:	The antiserum was produced against synthesized peptide derived from interinal of human AKAP14.
Formulation:	Phosphate buffered saline (without Mg ²⁺ and Ca ²⁺), pH 7.4, 150mM NaCl, 0.02% sodium azide and 50% glycerol.
Concentration:	lot specific
Purification:	The antibody was affinity-purified from rabbit antiserum by affinity-chromatography using epitope-specific immunogen.
Conjugation:	Unconjugated
Storage:	Store at -20°C as received.
Stability:	Stable for 12 months from date of receipt.
Gene Name:	A-kinase anchoring protein 14
Database Link:	NP_001008534 Entrez Gene 158798 Human Q86UN6
Synonyms:	AKAP28; PRKA14
Note:	AKAP14 antibody detects endogenous levels of total AKAP14 protein.
Protein Families:	Druggable Genome



[View online »](#)

Product images:


Western blot analysis of extracts from Jurkat cells, K562 cells and HUVEC cells, using AKAP14 antibody. The lane on the right is treated with the synthesized peptide.



Immunofluorescence analysis of HeLa cells, using AKAP14 antibody. The picture on the right is treated with the synthesized peptide.