

## Product datasheet for **TA316178**

### **nkx6.3 (NKX6-3) Rabbit Polyclonal Antibody**

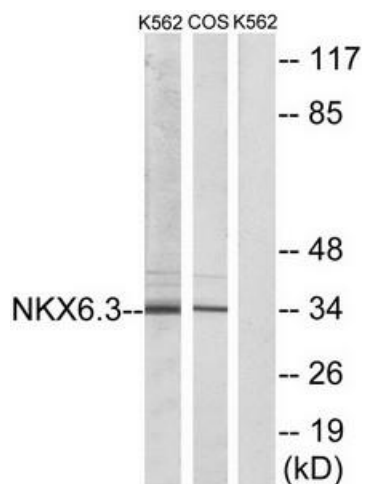
#### **Product data:**

<b>Product Type:</b>	Primary Antibodies
<b>Applications:</b>	IF, WB
<b>Recommended Dilution:</b>	WB: 1:500~1:3000, IF: 1:100~1:500, ELISA: 1:5000
<b>Reactivity:</b>	Human, Mouse
<b>Host:</b>	Rabbit
<b>Isotype:</b>	IgG
<b>Clonality:</b>	Polyclonal
<b>Immunogen:</b>	The antiserum was produced against synthesized peptide derived from internal of human NKX6.3.
<b>Formulation:</b>	Phosphate buffered saline (without Mg <sup>2+</sup> and Ca <sup>2+</sup> ), pH 7.4, 150mM NaCl, 0.02% sodium azide and 50% glycerol.
<b>Concentration:</b>	lot specific
<b>Purification:</b>	The antibody was affinity-purified from rabbit antiserum by affinity-chromatography using epitope-specific immunogen.
<b>Conjugation:</b>	Unconjugated
<b>Storage:</b>	Store at -20°C as received.
<b>Stability:</b>	Stable for 12 months from date of receipt.
<b>Gene Name:</b>	NK6 homeobox 3
<b>Database Link:</b>	<a href="#">NP_689781</a> <a href="#">Entrez Gene 74561 Mouse</a> <a href="#">Entrez Gene 157848 Human</a> <a href="#">A6NJ46</a>
<b>Synonyms:</b>	NKX6.3
<b>Note:</b>	NKX6.3 antibody detects endogenous levels of total NKX6.3 protein.

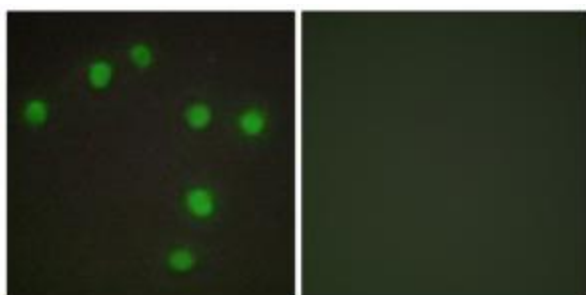


[View online »](#)

Product images:



Western blot analysis of extracts from K562 cells and COS-7 cells, using NKX6.3 antibody. The lane on the right is treated with the synthesized peptide.



Immunofluorescence analysis of HUVEC cells, using NKX6.3 antibody. The picture on the right is treated with the synthesized peptide.