

## Product datasheet for **TA316173**

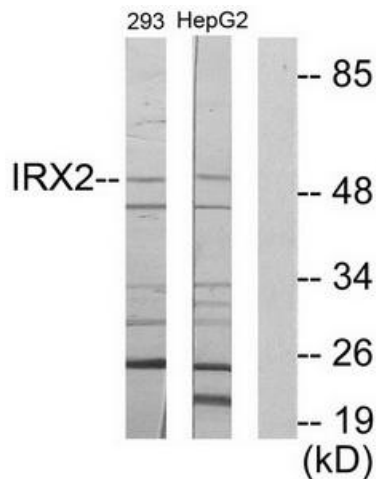
### IRX2 Rabbit Polyclonal Antibody

#### Product data:

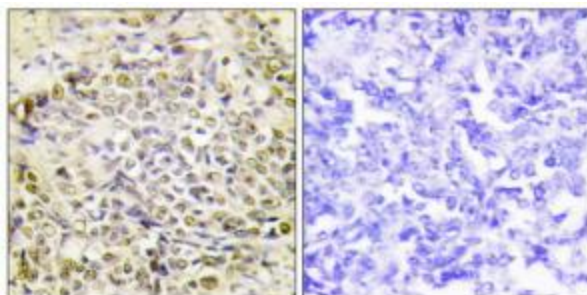
Product Type:	Primary Antibodies
Applications:	IF, IHC, WB
Recommended Dilution:	WB: 1:500~1:3000, IHC: 1:50~1:100, IF: 1:100~1:500, ELISA: 1:5000
Reactivity:	Human
Host:	Rabbit
Isotype:	IgG
Clonality:	Polyclonal
Immunogen:	The antiserum was produced against synthesized peptide derived from internal of human IRX2.
Formulation:	Phosphate buffered saline (without Mg <sup>2+</sup> and Ca <sup>2+</sup> ), pH 7.4, 150mM NaCl, 0.02% sodium azide and 50% glycerol.
Concentration:	lot specific
Purification:	The antibody was affinity-purified from rabbit antiserum by affinity-chromatography using epitope-specific immunogen.
Conjugation:	Unconjugated
Storage:	Store at -20°C as received.
Stability:	Stable for 12 months from date of receipt.
Gene Name:	iroquois homeobox 2
Database Link:	<a href="#">NP_001127694</a> <a href="#">Entrez Gene 153572 Human</a> <a href="#">Q9BZ11</a>
Synonyms:	IRXA2
Note:	IRX2 antibody detects endogenous levels of total IRX2 protein.
Protein Families:	Transcription Factors



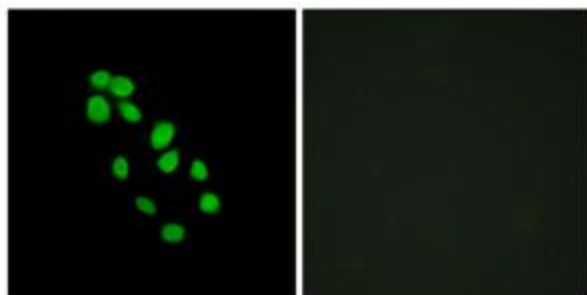
[View online »](#)

**Product images:**

Western blot analysis of extracts from 293 cells and HepG2 cells, using IRX2 antibody. The lane on the right is treated with the synthesized peptide.



Immunohistochemistry analysis of paraffin-embedded human lung carcinoma tissue using IRX2 antibody. The picture on the right is treated with the synthesized peptide.



Immunofluorescence analysis of HepG2 cells, using IRX2 antibody. The picture on the right is treated with the synthesized peptide.