

Product datasheet for **TA316172**

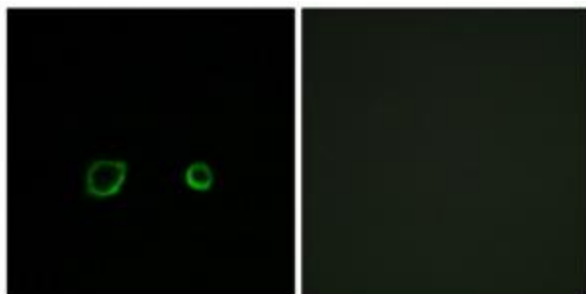
CNTN4 Rabbit Polyclonal Antibody

Product data:

Product Type:	Primary Antibodies
Applications:	IF
Recommended Dilution:	IF: 1:100~1:500, ELISA: 1:20000
Reactivity:	Human, Mouse, Rat
Host:	Rabbit
Isotype:	IgG
Clonality:	Polyclonal
Immunogen:	The antiserum was produced against synthesized peptide derived from internal of human CNTN4.
Formulation:	Phosphate buffered saline (without Mg ²⁺ and Ca ²⁺), pH 7.4, 150mM NaCl, 0.02% sodium azide and 50% glycerol.
Concentration:	lot specific
Purification:	The antibody was affinity-purified from rabbit antiserum by affinity-chromatography using epitope-specific immunogen.
Conjugation:	Unconjugated
Storage:	Store at -20°C as received.
Stability:	Stable for 12 months from date of receipt.
Gene Name:	contactin 4
Database Link:	NP_783301 Entrez Gene 116658 RatEntrez Gene 269784 MouseEntrez Gene 152330 Human Q8IWW2
Synonyms:	AXCAM; axonal-associated cell adhesion molecule; axonal cell adhesion molecule; BIG-2; CNTN4A; contactin 4; MGC33615; neural cell adhesion protein BIG-2; OTTHUMP00000147566; OTTHUMP00000147567
Note:	CNTN4 antibody detects endogenous levels of total CNTN4 protein.
Protein Families:	Secreted Protein



[View online »](#)

Product images:

Immunofluorescence analysis of A549 cells, using CNTN4 antibody. The picture on the right is treated with the synthesized peptide.