

## Product datasheet for **TA316164**

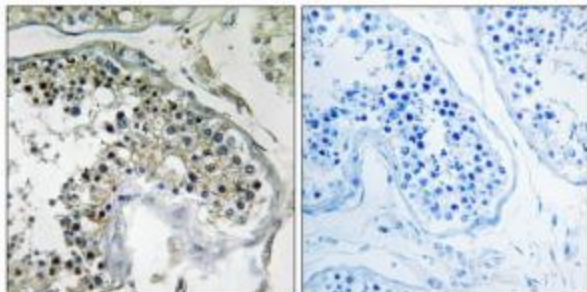
### PPP1R1C Rabbit Polyclonal Antibody

#### Product data:

Product Type:	Primary Antibodies
Applications:	IHC
Recommended Dilution:	IHC: 1:50~1:100, ELISA: 1:10000
Reactivity:	Human, Mouse
Host:	Rabbit
Isotype:	IgG
Clonality:	Polyclonal
Immunogen:	The antiserum was produced against synthesized peptide derived from internal of human PPP1R1C.
Formulation:	Phosphate buffered saline (without Mg <sup>2+</sup> and Ca <sup>2+</sup> ), pH 7.4, 150mM NaCl, 0.02% sodium azide and 50% glycerol.
Concentration:	lot specific
Purification:	The antibody was affinity-purified from rabbit antiserum by affinity-chromatography using epitope-specific immunogen.
Conjugation:	Unconjugated
Storage:	Store at -20°C as received.
Stability:	Stable for 12 months from date of receipt.
Gene Name:	protein phosphatase 1 regulatory inhibitor subunit 1C
Database Link:	<a href="#">NP_001074014</a> <a href="#">Entrez Gene 75276 Mouse</a> <a href="#">Entrez Gene 151242 Human</a> <a href="#">Q8WVI7</a>
Synonyms:	IPP5
Note:	PPP1R1C antibody detects endogenous levels of total PPP1R1C protein.
Protein Families:	Druggable Genome, Phosphatase



[View online »](#)

**Product images:**

The MGC Project Team; Genome Res. 14:2121-2127 (2004). Li N., Submitted (MAR-2002) to the EMBL/GenBank/DDBJ databases. Bechtel S., BMC Genomics 8:399-399 (2007) The picture on the right is treated with the synthesized peptide.