

## Product datasheet for **TA316163**

### ALS2CR13 (FAM117B) Rabbit Polyclonal Antibody

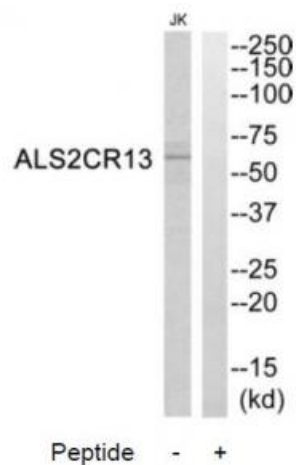
#### Product data:

|                       |                                                                                                                                         |
|-----------------------|-----------------------------------------------------------------------------------------------------------------------------------------|
| Product Type:         | Primary Antibodies                                                                                                                      |
| Applications:         | WB                                                                                                                                      |
| Recommended Dilution: | WB: 1:500~1:3000, ELISA: 1:5000                                                                                                         |
| Reactivity:           | Human, Mouse                                                                                                                            |
| Host:                 | Rabbit                                                                                                                                  |
| Isotype:              | IgG                                                                                                                                     |
| Clonality:            | Polyclonal                                                                                                                              |
| Immunogen:            | The antiserum was produced against synthesized peptide derived from C-terminal of human ALS2CR13.                                       |
| Formulation:          | Phosphate buffered saline (without Mg <sup>2+</sup> and Ca <sup>2+</sup> ), pH 7.4, 150mM NaCl, 0.02% sodium azide and 50% glycerol.    |
| Concentration:        | lot specific                                                                                                                            |
| Purification:         | The antibody was affinity-purified from rabbit antiserum by affinity-chromatography using epitope-specific immunogen.                   |
| Conjugation:          | Unconjugated                                                                                                                            |
| Storage:              | Store at -20°C as received.                                                                                                             |
| Stability:            | Stable for 12 months from date of receipt.                                                                                              |
| Gene Name:            | family with sequence similarity 117 member B                                                                                            |
| Database Link:        | <a href="#">NP_775782</a><br><a href="#">Entrez Gene 72750 Mouse</a> <a href="#">Entrez Gene 150864 Human</a><br><a href="#">Q6P1L5</a> |
| Synonyms:             | ALS2CR13                                                                                                                                |
| Note:                 | ALS2CR13 antibody detects endogenous levels of total ALS2CR13 protein.                                                                  |



[View online »](#)

## Product images:



Western blot analysis of extracts from Jurkat cells, using ALS2CR13 antibody. The lane on the right is treated with the synthesized peptide.