

Product datasheet for **TA316162**

Snf1lk (SIK1) Rabbit Polyclonal Antibody

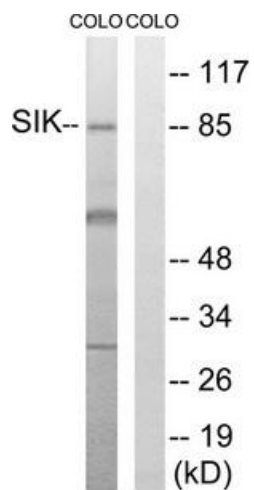
Product data:

Product Type:	Primary Antibodies
Applications:	WB
Recommended Dilution:	WB: 1:500~1:3000, ELISA: 1:40000
Reactivity:	Human, Rat
Host:	Rabbit
Isotype:	IgG
Clonality:	Polyclonal
Immunogen:	The antiserum was produced against synthesized non-phosphopeptide derived from human SIK around the phosphorylation site of threonine 182 (L-S-TP-W-C).
Formulation:	Phosphate buffered saline (without Mg ²⁺ and Ca ²⁺), pH 7.4, 150mM NaCl, 0.02% sodium azide and 50% glycerol.
Concentration:	lot specific
Purification:	The antibody was affinity-purified from rabbit antiserum by affinity-chromatography using epitope-specific immunogen.
Conjugation:	Unconjugated
Storage:	Store at -20°C as received.
Stability:	Stable for 12 months from date of receipt.
Gene Name:	salt inducible kinase 1
Database Link:	NP_775490 Entrez Gene 59329 Rat Entrez Gene 150094 Human P57059
Synonyms:	MSK; SIK; SNF1LK
Note:	SIK (Ab-182) antibody detects endogenous levels of total SIK protein.
Protein Families:	Druggable Genome, Protein Kinase



[View online »](#)

Product images:



Western blot analysis of extracts from COLO cells, treated with PMA (125ng/ml, 30mins), using SIK (Ab-182) antibody. The lane on the right is treated with the synthesized peptide.