

Product datasheet for **TA316158**

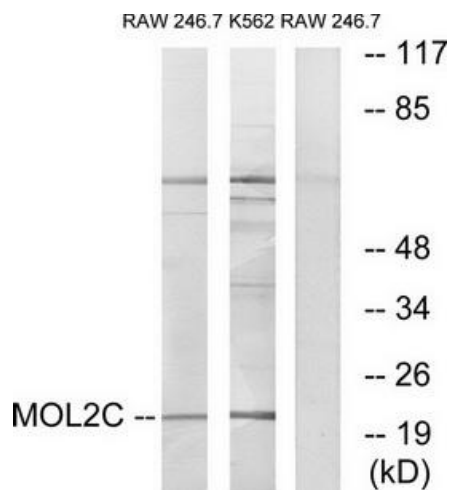
MOBKL2C (MOB3C) Rabbit Polyclonal Antibody

Product data:

Product Type:	Primary Antibodies
Applications:	WB
Recommended Dilution:	WB: 1:500~1:3000, ELISA: 1:40000
Reactivity:	Human, Mouse
Host:	Rabbit
Isotype:	IgG
Clonality:	Polyclonal
Immunogen:	The antiserum was produced against synthesized peptide derived from internal of human MOL2C.
Formulation:	Phosphate buffered saline (without Mg ²⁺ and Ca ²⁺), pH 7.4, 150mM NaCl, 0.02% sodium azide and 50% glycerol.
Concentration:	lot specific
Purification:	The antibody was affinity-purified from rabbit antiserum by affinity-chromatography using epitope-specific immunogen.
Conjugation:	Unconjugated
Storage:	Store at -20°C as received.
Stability:	Stable for 12 months from date of receipt.
Gene Name:	MOB kinase activator 3C
Database Link:	NP_660322 Entrez Gene 100465 Mouse Entrez Gene 148932 Human Q70IA8
Synonyms:	MOB1E; MOBKL2C
Note:	MOL2C antibody detects endogenous levels of total MOL2C protein.



[View online »](#)

Product images:


Western blot analysis of extracts from RAW264.7 cells and K562 cells, using MOL2C antibody. The lane on the right is treated with the synthesized peptide.