

Product datasheet for **TA316157**

DIRAS1 Rabbit Polyclonal Antibody

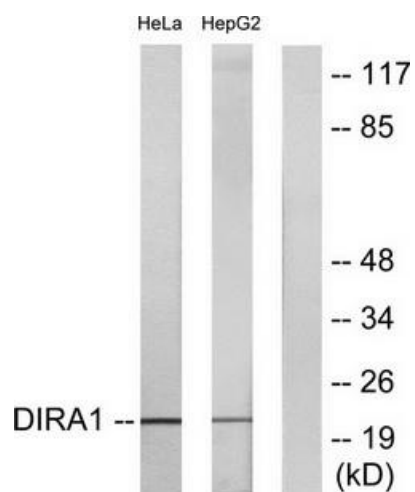
Product data:

Product Type:	Primary Antibodies
Applications:	WB
Recommended Dilution:	WB: 1:500~1:3000, ELISA: 1:20000
Reactivity:	Human
Host:	Rabbit
Isotype:	IgG
Clonality:	Polyclonal
Immunogen:	The antiserum was produced against synthesized peptide derived from C-terminal of human DIRA1.
Formulation:	Phosphate buffered saline (without Mg ²⁺ and Ca ²⁺), pH 7.4, 150mM NaCl, 0.02% sodium azide and 50% glycerol.
Concentration:	lot specific
Purification:	The antibody was affinity-purified from rabbit antiserum by affinity-chromatography using epitope-specific immunogen.
Conjugation:	Unconjugated
Storage:	Store at -20°C as received.
Stability:	Stable for 12 months from date of receipt.
Gene Name:	DIRAS family GTPase 1
Database Link:	NP_660156 Entrez Gene 148252 Human O95057
Synonyms:	Di-Ras1; GBTS1; RIG
Note:	DIRA1 antibody detects endogenous levels of total DIRA1 protein.



[View online »](#)

Product images:



Western blot analysis of extracts from HeLa cells and HepG2 cells, using DIRA1 antibody. The lane on the right is treated with the synthesized peptide.