

## Product datasheet for **TA316155**

### Calpain 12 (CAPN12) Rabbit Polyclonal Antibody

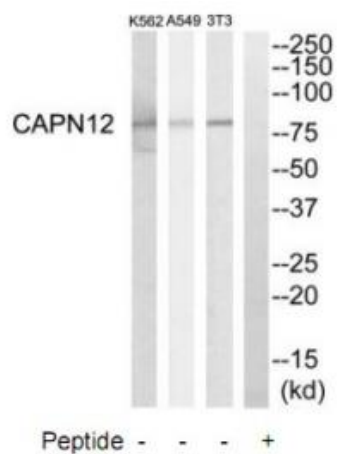
#### Product data:

Product Type:	Primary Antibodies
Applications:	WB
Recommended Dilution:	WB: 1:500~1:3000, ELISA: 1:5000
Reactivity:	Human
Host:	Rabbit
Isotype:	IgG
Clonality:	Polyclonal
Immunogen:	The antiserum was produced against synthesized peptide derived from internal of human CAPN12.
Formulation:	Phosphate buffered saline (without Mg <sup>2+</sup> and Ca <sup>2+</sup> ), pH 7.4, 150mM NaCl, 0.02% sodium azide and 50% glycerol.
Concentration:	lot specific
Purification:	The antibody was affinity-purified from rabbit antiserum by affinity-chromatography using epitope-specific immunogen.
Conjugation:	Unconjugated
Storage:	Store at -20°C as received.
Stability:	Stable for 12 months from date of receipt.
Gene Name:	calpain 12
Database Link:	<a href="#">NP_653292</a> <a href="#">Entrez Gene 147968 Human</a> <a href="#">Q6ZSI9</a>
Synonyms:	MGC20576
Note:	CAPN12 antibody detects endogenous levels of total CAPN12 protein.
Protein Families:	Druggable Genome



[View online »](#)

## Product images:



Western blot analysis of extracts from NIH-3T3 cells, A549 cells and K562 cells, using CAPN12 antibody. The lane on the right is treated with the synthesized peptide.