

## Product datasheet for **TA316152**

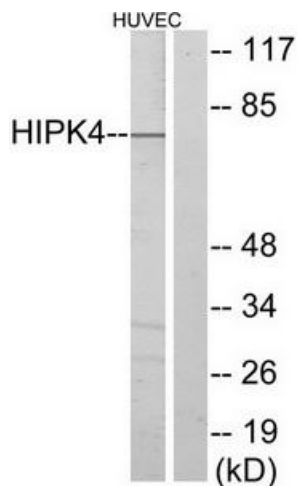
### HIPK4 Rabbit Polyclonal Antibody

#### Product data:

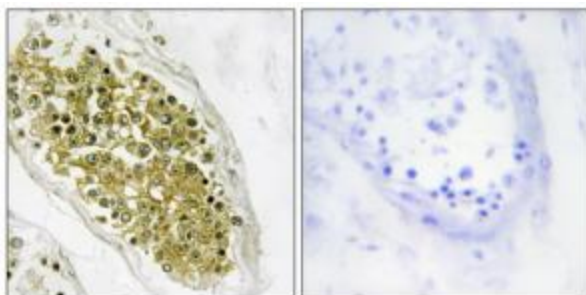
Product Type:	Primary Antibodies
Applications:	IF, IHC, WB
Recommended Dilution:	WB: 1:500~1:3000, IHC: 1:50~1:100, IF: 1:00~1:500, ELISA: 1:20000
Reactivity:	Human, Mouse, Rat
Host:	Rabbit
Isotype:	IgG
Clonality:	Polyclonal
Immunogen:	The antiserum was produced against synthesized peptide derived from internal of human HIPK4.
Formulation:	Phosphate buffered saline (without Mg <sup>2+</sup> and Ca <sup>2+</sup> ), pH 7.4, 150mM NaCl, 0.02% sodium azide and 50% glycerol.
Concentration:	lot specific
Purification:	The antibody was affinity-purified from rabbit antiserum by affinity-chromatography using epitope-specific immunogen.
Conjugation:	Unconjugated
Storage:	Store at -20°C as received.
Stability:	Stable for 12 months from date of receipt.
Gene Name:	homeodomain interacting protein kinase 4
Database Link:	<a href="#">NP_653286</a> <a href="#">Entrez Gene 233020 MouseEntrez Gene 308449 RatEntrez Gene 147746 Human Q8NE63</a>
Synonyms:	FLJ32818
Note:	HIPK4 antibody detects endogenous levels of total HIPK4 protein.
Protein Families:	Druggable Genome, Protein Kinase



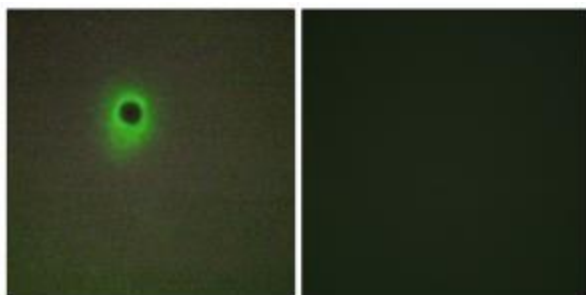
[View online »](#)

**Product images:**

Western blot analysis of extracts from HUVEC cells, using HIPK4 antibody. The lane on the right is treated with the synthesized peptide.



Immunohistochemistry analysis of paraffin-embedded human testis tissue using HIPK4 antibody. The picture on the right is treated with the synthesized peptide.



Immunofluorescence analysis of A549 cells, using HIPK4 antibody. The picture on the right is treated with the synthesized peptide.