

## Product datasheet for **TA316148**

### CD300 (CD300LF) Rabbit Polyclonal Antibody

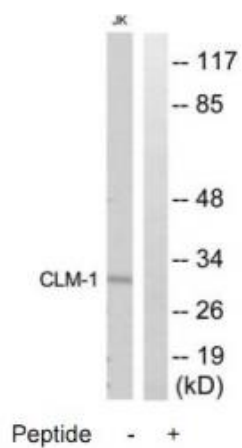
#### Product data:

Product Type:	Primary Antibodies
Applications:	WB
Recommended Dilution:	WB: 1:500~1:3000, ELISA: 1:40000
Reactivity:	Human
Host:	Rabbit
Isotype:	IgG
Clonality:	Polyclonal
Immunogen:	The antiserum was produced against synthesized peptide derived from internal of human CLM-1.
Formulation:	Phosphate buffered saline (without Mg <sup>2+</sup> and Ca <sup>2+</sup> ), pH 7.4, 150mM NaCl, 0.02% sodium azide and 50% glycerol.
Concentration:	lot specific
Purification:	The antibody was affinity-purified from rabbit antiserum by affinity-chromatography using epitope-specific immunogen.
Conjugation:	Unconjugated
Storage:	Store at -20°C as received.
Stability:	Stable for 12 months from date of receipt.
Gene Name:	CD300 molecule like family member f
Database Link:	<a href="#">NP_620587</a> <a href="#">Entrez Gene 146722 Human</a> <a href="#">Q8TDQ1</a>
Synonyms:	CD300f; CLM-1; CLM1; IgSF13; IREM-1; IREM1; LMIR3; NKIR
Note:	CLM-1 antibody detects endogenous levels of total CLM-1 protein.
Protein Families:	Druggable Genome, Transmembrane



[View online »](#)

## Product images:



Western blot analysis of extracts from Jurkat cells, using CLM-1 antibody. The lane on the right is treated with the synthesized peptide.