

Product datasheet for **TA316142**

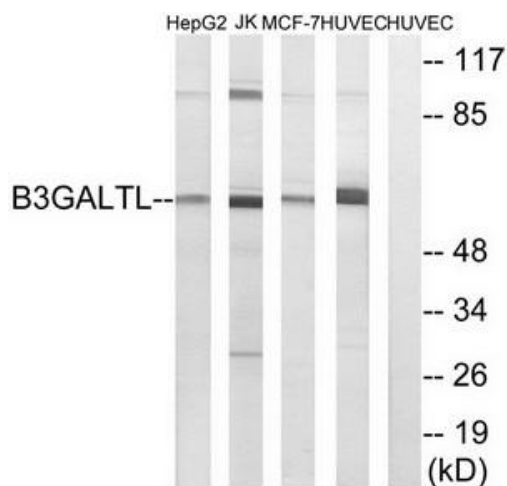
B3GALTL (B3GLCT) Rabbit Polyclonal Antibody

Product data:

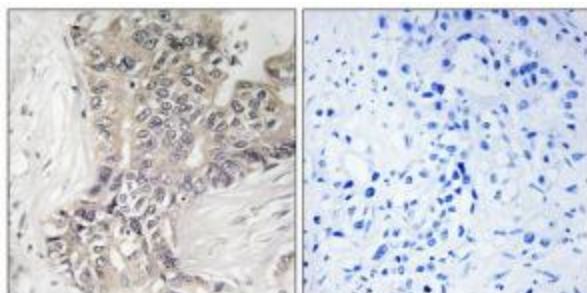
Product Type:	Primary Antibodies
Applications:	IHC, WB
Recommended Dilution:	WB: 1:500~1:3000, IHC: 1:50~1:100, ELISA: 1:40000
Reactivity:	Human
Host:	Rabbit
Isotype:	IgG
Clonality:	Polyclonal
Immunogen:	The antiserum was produced against synthesized peptide derived from C-terminal of human B3GALTL.
Formulation:	Phosphate buffered saline (without Mg ²⁺ and Ca ²⁺), pH 7.4, 150mM NaCl, 0.02% sodium azide and 50% glycerol.
Concentration:	lot specific
Purification:	The antibody was affinity-purified from rabbit antiserum by affinity-chromatography using epitope-specific immunogen.
Conjugation:	Unconjugated
Storage:	Store at -20°C as received.
Stability:	Stable for 12 months from date of receipt.
Gene Name:	beta 3-glycosyltransferase
Database Link:	NP_919299 Entrez Gene 145173 Human Q6Y288
Synonyms:	B3GALTL; B3Glc-T; B3GTL; beta3Glc-T; Gal-T
Note:	B3GALTL antibody detects endogenous levels of total B3GALTL protein.
Protein Families:	Transmembrane



[View online »](#)

Product images:


Western blot analysis of extracts from HepG2 cells, Jurkat cells, MCF-7 cells and HUVEC cells, using B3GALTL antibody. The lane on the right is treated with the synthesized peptide.



Immunohistochemistry analysis of paraffin-embedded human liver carcinoma tissue using B3GALTL antibody. The picture on the right is treated with the synthesized peptide.