

## Product datasheet for **TA316141**

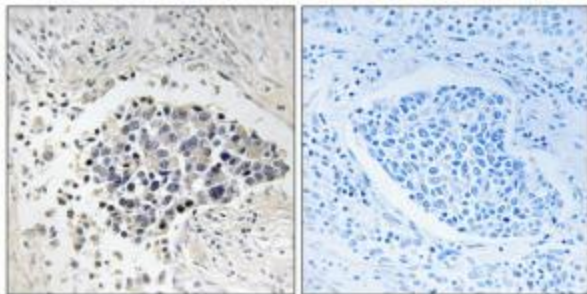
### CPNE8 Rabbit Polyclonal Antibody

#### Product data:

Product Type:	Primary Antibodies
Applications:	IHC
Recommended Dilution:	IHC: 1:50~1:100, ELISA: 1:40000
Reactivity:	Human, Mouse, Rat
Host:	Rabbit
Isotype:	IgG
Clonality:	Polyclonal
Immunogen:	The antiserum was produced against synthesized peptide derived from N-terminal of human CPNE8.
Formulation:	Phosphate buffered saline (without Mg <sup>2+</sup> and Ca <sup>2+</sup> ), pH 7.4, 150mM NaCl, 0.02% sodium azide and 50% glycerol.
Concentration:	lot specific
Purification:	The antibody was affinity-purified from rabbit antiserum by affinity-chromatography using epitope-specific immunogen.
Conjugation:	Unconjugated
Storage:	Store at -20°C as received.
Stability:	Stable for 12 months from date of receipt.
Gene Name:	copine 8
Database Link:	<a href="#">NP_705898</a> <a href="#">Entrez Gene 66871 Mouse</a> <a href="#">Entrez Gene 362988 Rat</a> <a href="#">Entrez Gene 144402 Human</a> <a href="#">Q86YQ8</a>
Synonyms:	MGC129645; MGC129646
Note:	CPNE8 antibody detects endogenous levels of total CPNE8 protein.



[View online »](#)

**Product images:**

Immunohistochemistry analysis of paraffin-embedded human lung carcinoma tissue using CPNE8 antibody. The picture on the right is treated with the synthesized peptide.