

Product datasheet for **TA316140**

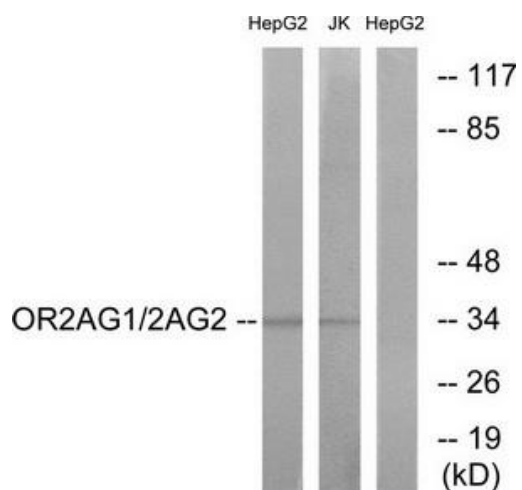
OR2AG1 Rabbit Polyclonal Antibody

Product data:

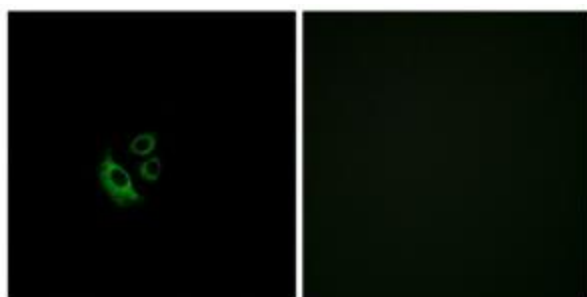
Product Type:	Primary Antibodies
Applications:	IF, WB
Recommended Dilution:	WB: 1:500~1:3000, IF: 1:100~1:500, ELISA: 1:10000
Reactivity:	Human
Host:	Rabbit
Isotype:	IgG
Clonality:	Polyclonal
Immunogen:	The antiserum was produced against synthesized peptide derived from internal of human OR2AG1.
Formulation:	Phosphate buffered saline (without Mg ²⁺ and Ca ²⁺), pH 7.4, 150mM NaCl, 0.02% sodium azide and 50% glycerol.
Concentration:	lot specific
Purification:	The antibody was affinity-purified from rabbit antiserum by affinity-chromatography using epitope-specific immunogen.
Conjugation:	Unconjugated
Storage:	Store at -20°C as received.
Stability:	Stable for 12 months from date of receipt.
Gene Name:	olfactory receptor family 2 subfamily AG member 1 (gene/pseudogene)
Database Link:	NP_001004489 Entrez Gene 144125 Human Q9H205
Synonyms:	OR2AG3; OR11-79
Note:	OR2AG1/2AG2 antibody detects endogenous levels of total OR2AG1 protein.
Protein Families:	Transmembrane
Protein Pathways:	Olfactory transduction



[View online »](#)

Product images:


Western blot analysis of extracts from HepG2 cells and Jurkat cells, using OR2AG1/2AG2 antibody. The lane on the right is treated with the synthesized peptide.



Immunofluorescence analysis of A549 cells, using OR2AG1/2AG2 antibody. The picture on the right is treated with the synthesized peptide.