

Product datasheet for **TA316138**

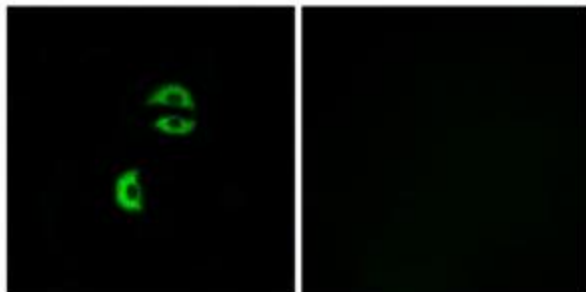
LDLRAD3 Rabbit Polyclonal Antibody

Product data:

Product Type:	Primary Antibodies
Applications:	IF
Recommended Dilution:	IF: 1:100~1:500, ELISA: 1:10000
Reactivity:	Human, Mouse
Host:	Rabbit
Isotype:	IgG
Clonality:	Polyclonal
Immunogen:	The antiserum was produced against synthesized peptide derived from internal of human LDLRAD3.
Formulation:	Phosphate buffered saline (without Mg ²⁺ and Ca ²⁺), pH 7.4, 150mM NaCl, 0.02% sodium azide and 50% glycerol.
Concentration:	lot specific
Purification:	The antibody was affinity-purified from rabbit antiserum by affinity-chromatography using epitope-specific immunogen.
Conjugation:	Unconjugated
Storage:	Store at -20°C as received.
Stability:	Stable for 12 months from date of receipt.
Gene Name:	low density lipoprotein receptor class A domain containing 3
Database Link:	NP_777562 Entrez Gene 241576 Mouse Entrez Gene 143458 Human Q86YD5
Synonyms:	LRAD3
Note:	LDLRAD3 antibody detects endogenous levels of total LDLRAD3 protein.
Protein Families:	Druggable Genome, Transmembrane



[View online »](#)

Product images:

Immunofluorescence analysis of A549 cells, using LDLRAD3 antibody. The picture on the right is treated with the synthesized peptide.