

Product datasheet for **TA316137**

VTI1A Rabbit Polyclonal Antibody

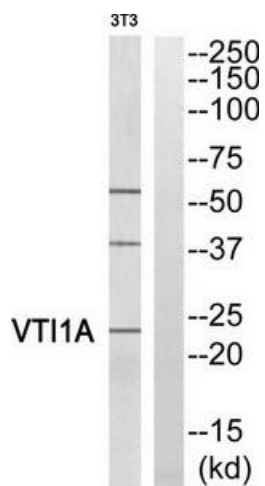
Product data:

Product Type:	Primary Antibodies
Applications:	WB
Recommended Dilution:	WB: 1:500~1:3000, ELISA: 1:10000
Reactivity:	Human, Mouse, Rat
Host:	Rabbit
Isotype:	IgG
Clonality:	Polyclonal
Immunogen:	The antiserum was produced against synthesized peptide derived from internal of human VTI1A.
Formulation:	Phosphate buffered saline (without Mg ²⁺ and Ca ²⁺), pH 7.4, 150mM NaCl, 0.02% sodium azide and 50% glycerol.
Concentration:	lot specific
Purification:	The antibody was affinity-purified from rabbit antiserum by affinity-chromatography using epitope-specific immunogen.
Conjugation:	Unconjugated
Storage:	Store at -20°C as received.
Stability:	Stable for 12 months from date of receipt.
Gene Name:	vesicle transport through interaction with t-SNAREs 1A
Database Link:	NP_660207 Entrez Gene 53611 Mouse Entrez Gene 65277 Rat Entrez Gene 143187 Human Q96AJ9
Synonyms:	MMDS3; MVti1; Vti1-rp2; VTI1RP2
Note:	VTI1A antibody detects endogenous levels of total VTI1A protein.
Protein Families:	Transmembrane
Protein Pathways:	SNARE interactions in vesicular transport



[View online »](#)

Product images:



Western blot analysis of extracts from 3T3 cells, using VT11A antibody. The lane on the right is treated with the synthesized peptide.