

## Product datasheet for **TA316136**

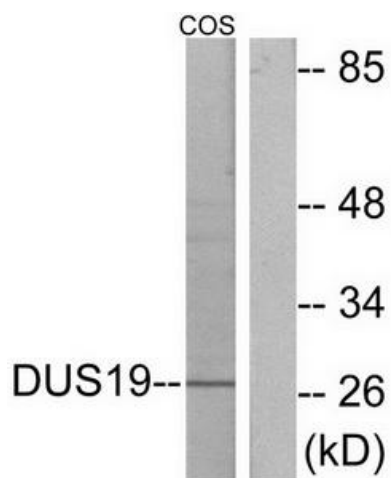
### DUSP19 Rabbit Polyclonal Antibody

#### Product data:

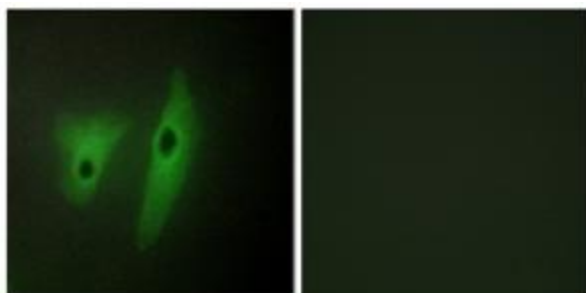
Product Type:	Primary Antibodies
Applications:	IF, WB
Recommended Dilution:	WB: 1:500~1:3000, IF: 1:100~1:500, ELISA: 1:20000
Reactivity:	Human
Host:	Rabbit
Isotype:	IgG
Clonality:	Polyclonal
Immunogen:	The antiserum was produced against synthesized peptide derived from internal of human DUS19.
Formulation:	Phosphate buffered saline (without Mg <sup>2+</sup> and Ca <sup>2+</sup> ), pH 7.4, 150mM NaCl, 0.02% sodium azide and 50% glycerol.
Concentration:	lot specific
Purification:	The antibody was affinity-purified from rabbit antiserum by affinity-chromatography using epitope-specific immunogen.
Conjugation:	Unconjugated
Storage:	Store at -20°C as received.
Stability:	Stable for 12 months from date of receipt.
Gene Name:	dual specificity phosphatase 19
Database Link:	<a href="#">NP_001135786</a> <a href="#">Entrez Gene 142679 Human</a> <a href="#">Q8WTR2</a>
Synonyms:	DUSP17; LMWDSP3; SKRP1; TS-DSP1
Note:	DUS19 antibody detects endogenous levels of total DUS19 protein.
Protein Families:	Druggable Genome, Phosphatase

[View online »](#)

## Product images:



Western blot analysis of extracts from COS-7 cells, using DUSP19 antibody. The lane on the right is treated with the synthesized peptide.



Immunofluorescence analysis of HeLa cells, using DUSP19 antibody. The picture on the right is treated with the synthesized peptide.