

## Product datasheet for **TA316127**

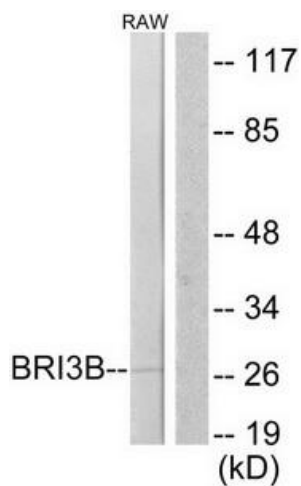
### **BRI3BP Rabbit Polyclonal Antibody**

#### **Product data:**

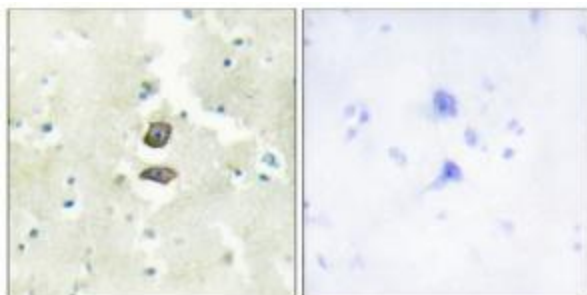
<b>Product Type:</b>	Primary Antibodies
<b>Applications:</b>	IHC, WB
<b>Recommended Dilution:</b>	WB: 1:500~1:3000, IHC: 1:50~1:100, ELISA: 1:20000
<b>Reactivity:</b>	Human, Mouse
<b>Host:</b>	Rabbit
<b>Isotype:</b>	IgG
<b>Clonality:</b>	Polyclonal
<b>Immunogen:</b>	The antiserum was produced against synthesized peptide derived from internal of human BRI3B.
<b>Formulation:</b>	Phosphate buffered saline (without Mg <sup>2+</sup> and Ca <sup>2+</sup> ), pH 7.4, 150mM NaCl, 0.02% sodium azide and 50% glycerol.
<b>Concentration:</b>	lot specific
<b>Purification:</b>	The antibody was affinity-purified from rabbit antiserum by affinity-chromatography using epitope-specific immunogen.
<b>Conjugation:</b>	Unconjugated
<b>Storage:</b>	Store at -20°C as received.
<b>Stability:</b>	Stable for 12 months from date of receipt.
<b>Gene Name:</b>	BRI3 binding protein
<b>Database Link:</b>	<a href="#">NP_542193</a> <a href="#">Entrez Gene 76809 Mouse</a> <a href="#">Entrez Gene 140707 Human</a> <a href="#">Q8WY22</a>
<b>Synonyms:</b>	BNAS1; HCCR-1; HCCR-2; HCCRBP-1; HCCRBP-3; KG19
<b>Note:</b>	BRI3B antibody detects endogenous levels of total BRI3B protein.
<b>Protein Families:</b>	Transmembrane



[View online »](#)

**Product images:**

Western blot analysis of extracts from RAW264.7 cells, using BRI3B antibody. The lane on the right is treated with the synthesized peptide.



Immunohistochemistry analysis of paraffin-embedded human brain tissue using BRI3B antibody. The picture on the right is treated with the synthesized peptide.