

## Product datasheet for **TA316124**

### **S100A16 Rabbit Polyclonal Antibody**

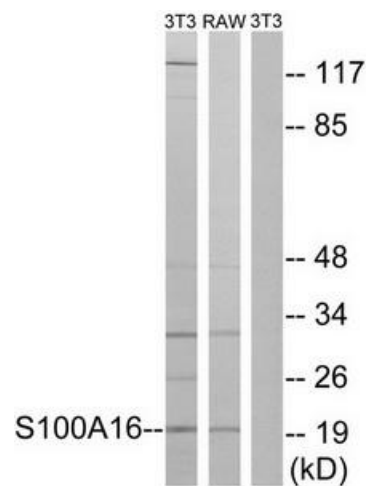
#### **Product data:**

<b>Product Type:</b>	Primary Antibodies
<b>Applications:</b>	WB
<b>Recommended Dilution:</b>	WB: 1:500~1:3000, ELISA: 1:40000
<b>Reactivity:</b>	Human, Rat
<b>Host:</b>	Rabbit
<b>Isotype:</b>	IgG
<b>Clonality:</b>	Polyclonal
<b>Immunogen:</b>	The antiserum was produced against synthesized peptide derived from internal of human S100A16.
<b>Formulation:</b>	Phosphate buffered saline (without Mg <sup>2+</sup> and Ca <sup>2+</sup> ), pH 7.4, 150mM NaCl, 0.02% sodium azide and 50% glycerol.
<b>Concentration:</b>	lot specific
<b>Purification:</b>	The antibody was affinity-purified from rabbit antiserum by affinity-chromatography using epitope-specific immunogen.
<b>Conjugation:</b>	Unconjugated
<b>Storage:</b>	Store at -20°C as received.
<b>Stability:</b>	Stable for 12 months from date of receipt.
<b>Gene Name:</b>	S100 calcium binding protein A16
<b>Database Link:</b>	<a href="#">NP_525127</a> <a href="#">Entrez Gene 361991 Rat</a> <a href="#">Entrez Gene 140576 Human</a> <a href="#">Q96FQ6</a>
<b>Synonyms:</b>	AAG13; DT1P1A7; S100F
<b>Note:</b>	S100A16 antibody detects endogenous levels of total S100A16 protein.



[View online »](#)

## Product images:



Western blot analysis of extracts from 3T3 cells and RAW264.7 cells, using S100A16 antibody. The lane on the right is treated with the synthesized peptide.