

## Product datasheet for **TA316122**

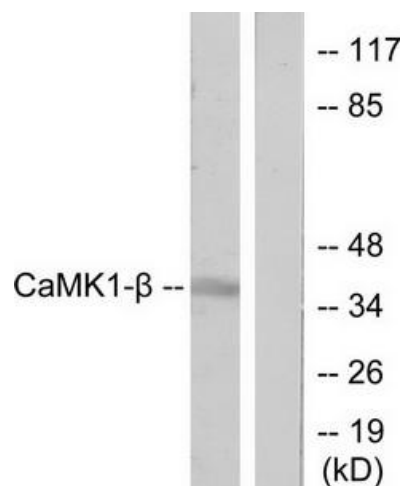
### PNCK Rabbit Polyclonal Antibody

#### Product data:

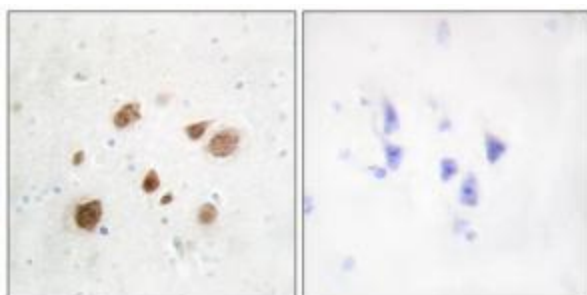
Product Type:	Primary Antibodies
Applications:	IHC, WB
Recommended Dilution:	WB: 1:500~1:3000, IHC: 1:50~1:100, ELISA: 1:10000
Reactivity:	Human, Mouse, Rat
Host:	Rabbit
Isotype:	IgG
Clonality:	Polyclonal
Immunogen:	The antiserum was produced against synthesized peptide derived from internal of human CaMK1- $\beta$ .
Formulation:	Phosphate buffered saline (without Mg <sup>2+</sup> and Ca <sup>2+</sup> ), pH 7.4, 150mM NaCl, 0.02% sodium azide and 50% glycerol.
Concentration:	lot specific
Purification:	The antibody was affinity-purified from rabbit antiserum by affinity-chromatography using epitope-specific immunogen.
Conjugation:	Unconjugated
Storage:	Store at -20°C as received.
Stability:	Stable for 12 months from date of receipt.
Gene Name:	pregnancy up-regulated nonubiquitous CaM kinase
Database Link:	<a href="#">NP_001034671</a> <a href="#">Entrez Gene 29660 Rat</a> <a href="#">Entrez Gene 93843 Mouse</a> <a href="#">Entrez Gene 139728 Human</a> <a href="#">Q6P2M8</a>
Synonyms:	BSTK3; CaMK1b
Note:	CaMK1-. antibody detects endogenous levels of total CaMK1-. protein.
Protein Families:	Druggable Genome, Protein Kinase



[View online »](#)

**Product images:**

Western blot analysis of extracts from LOVO cells, treated with H<sub>2</sub>O<sub>2</sub> (100μM, 30mins), using CaMK1-β antibody. The lane on the right is treated with the synthesized peptide.



Immunohistochemistry analysis of paraffin-embedded human brain tissue using CaMK1-β antibody. The picture on the right is treated with the synthesized peptide.