

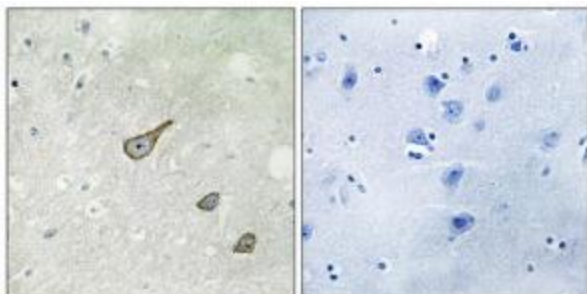
Product datasheet for **TA316120**

DGKK Rabbit Polyclonal Antibody

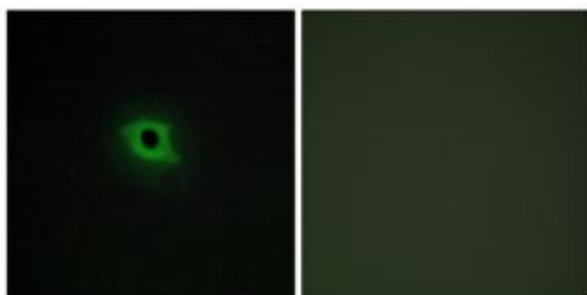
Product data:

Product Type:	Primary Antibodies
Applications:	IF, IHC
Recommended Dilution:	IHC: 1:50~1:100, IF: 1:100~1:500, ELISA: 1:5000
Reactivity:	Human
Host:	Rabbit
Isotype:	IgG
Clonality:	Polyclonal
Immunogen:	The antiserum was produced against synthesized peptide derived from C-terminal of human DGKK.
Formulation:	Phosphate buffered saline (without Mg ²⁺ and Ca ²⁺), pH 7.4, 150mM NaCl, 0.02% sodium azide and 50% glycerol.
Concentration:	lot specific
Purification:	The antibody was affinity-purified from rabbit antiserum by affinity-chromatography using epitope-specific immunogen.
Conjugation:	Unconjugated
Storage:	Store at -20°C as received.
Stability:	Stable for 12 months from date of receipt.
Gene Name:	diacylglycerol kinase kappa
Database Link:	NP_001013764 Entrez Gene 139189 Human Q5KSL6
Synonyms:	MRX68
Note:	DGKK antibody detects endogenous levels of total DGKK protein.
Protein Families:	Druggable Genome

[View online »](#)

Product images:

Immunohistochemistry analysis of paraffin-embedded human brain tissue, using DGKK antibody. The picture on the right is treated with the synthesized peptide.



Immunofluorescence analysis of COS-7 cells, using DGKK antibody. The picture on the right is treated with the synthesized peptide.