

Product datasheet for **TA316117**

OR13C4 Rabbit Polyclonal Antibody

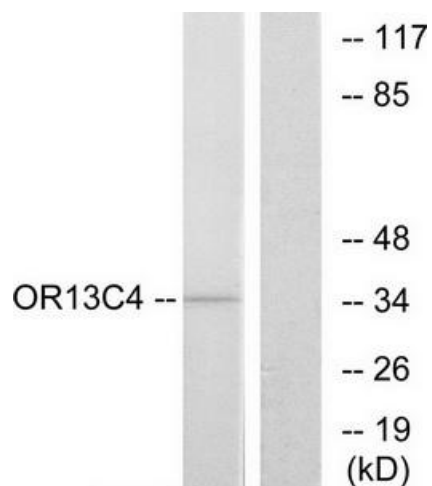
Product data:

Product Type:	Primary Antibodies
Applications:	IF, WB
Recommended Dilution:	WB: 1:500~1:3000, IF: 1:100~1:500, ELISA: 1:5000
Reactivity:	Human
Host:	Rabbit
Isotype:	IgG
Clonality:	Polyclonal
Immunogen:	The antiserum was produced against synthesized peptide derived from internal of human OR13C4.
Formulation:	Phosphate buffered saline (without Mg ²⁺ and Ca ²⁺), pH 7.4, 150mM NaCl, 0.02% sodium azide and 50% glycerol.
Concentration:	lot specific
Purification:	The antibody was affinity-purified from rabbit antiserum by affinity-chromatography using epitope-specific immunogen.
Conjugation:	Unconjugated
Storage:	Store at -20°C as received.
Stability:	Stable for 12 months from date of receipt.
Gene Name:	olfactory receptor family 13 subfamily C member 4
Database Link:	NP_001001919 Entrez Gene 138804 Human Q8NGS5
Synonyms:	HSHTPCR17; HTPCR17; OR2K1; OR9-7; OR37F
Note:	OR13C4 antibody detects endogenous levels of total OR13C4 protein.
Protein Families:	Transmembrane
Protein Pathways:	Olfactory transduction

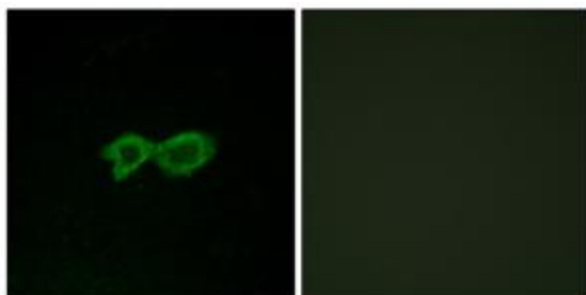


[View online »](#)

Product images:



Western blot analysis of extracts from COS-7 cells, using OR13C4 antibody. The lane on the right is treated with the synthesized peptide.



Immunofluorescence analysis of LOVO cells, using OR13C4 antibody. The picture on the right is treated with the synthesized peptide.